

## Timor-Leste PSC TL-SO-19-16

### Planned Chuditch Appraisal Well Location

October 2023



# Important Notice & Disclaimer

The information contained in this document (“Presentation”) has been prepared by Baron Oil plc (the “Company”). The Company is a UK company quoted on AIM, a market operated by London Stock Exchange plc. This Presentation has not been fully verified and is subject to material updating, revision and further verification and amendment without notice. This Presentation has not been approved by an authorised person in accordance with Section 21 of the Financial Services and Markets Act 2000 (as amended) (“FSMA”) and therefore it is being provided for information purposes only.

While the information contained herein has been prepared in good faith, neither the Company nor any of its directors, officers, agents, employees or advisers give, have given or have authority to give, any representations or warranties (express or implied) as to, or in relation to, the accuracy, reliability or completeness of the information in this Presentation, or any revision thereof, or of any other written or oral information made or to be made available to any interested party or its advisers (all such information being referred to as “Information”) and liability therefore is expressly disclaimed. Accordingly, neither the Company nor any of its directors, officers, agents, employees or advisers take any responsibility for, or will accept any liability whether direct or indirect, express or implied, contractual, tortious, statutory or otherwise, in respect of, the accuracy or completeness of the Information or for any of the opinions contained herein or for any errors, omissions or misstatements or for any loss, howsoever arising, from the use of this Presentation.

The views of the Company’s management/directors and/or its partners set out in this document could ultimately prove to be incorrect. No warranty, express or implied, is given by the presentation of these figures here and investors should place no reliance on the Company’s estimates cited in this document.

The technical information contained in the Presentation has been reviewed and approved by Jon Ford BSc, Fellow of the Geological Society, Technical Director of the Company. He has compiled, read and approved the technical disclosure in this Presentation and indicated where it does not comply with the Society of Petroleum Engineers’ standard.

This Presentation may contain “forward-looking statements” that involve substantial risks and uncertainties, and actual results and developments may differ materially from those expressed or implied by these statements. These forward-looking statements are statements regarding the Company’s intentions, beliefs or current expectations concerning, among other things, the Company’s results of operations, performance, financial condition, prospects, growth, strategies and the industry in which the Company operates. By their nature, forward-looking statements involve risks and uncertainties because they relate to events and depend on circumstances that may or may not occur in the future. These forward-looking statements speak only as of the date of this Presentation and the Company does not undertake any obligation to publicly release any revisions to these forward-looking statements to reflect events or circumstances after the date of this Presentation.

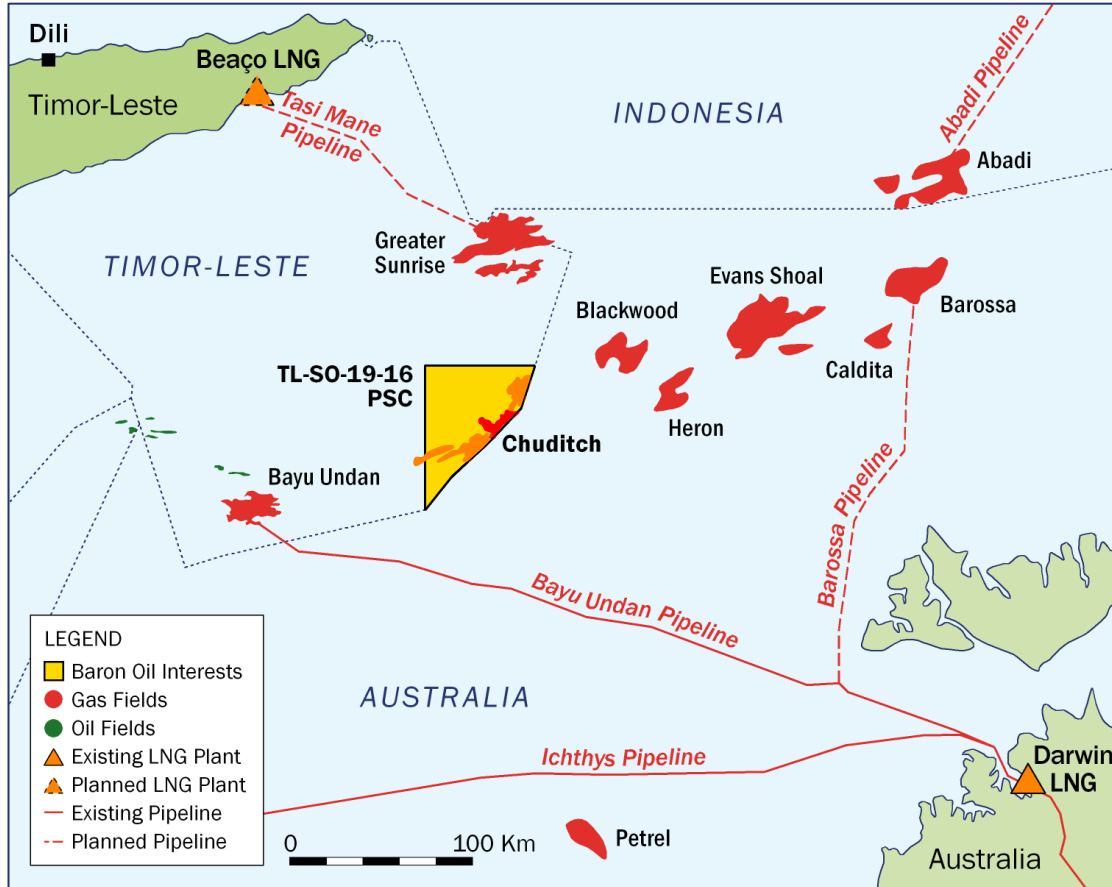
This Presentation should not be considered as the giving of investment advice by the Company or any of its directors, officers, agents, employees or advisers. In particular, this Presentation does not constitute or form part of any offer or invitation to subscribe for or purchase any securities and neither this Presentation nor anything contained herein shall form the basis of any contract or commitment whatsoever. No reliance may be placed for any purpose whatsoever on the information or opinions contained in these slides or the Presentation or on the completeness, accuracy or fairness thereof. In particular, any estimates or projections or opinions contained herein necessarily involve significant elements of subjective judgment, analysis and assumptions and each recipient should satisfy itself in relation to such matters.

Neither the issue of this Presentation nor any part of its contents is to be taken as any form of commitment on the part of the Company to proceed with any transaction and the right is reserved to terminate any discussions or negotiations with any prospective investors. In no circumstances will the Company be responsible for any costs, losses or expenses incurred in connection with any appraisal or investigation of the Company. In furnishing this Presentation, the Company does not undertake or agree to any obligation to provide the recipient with access to any additional information or to update this Presentation or to correct any inaccuracies in, or omissions from, this Presentation which may become apparent.

Neither this Presentation nor any copy of it may be (a) taken or transmitted into Australia, Canada, Japan, the Republic of South Africa or the United States of America (each a “Restricted Territory”), their territories or possessions; (b) distributed to any U.S. person (as defined in Regulation S under the United States Securities Act of 1933 (as amended)) or (c) distributed to any individual outside a Restricted Territory who is a resident thereof in any such case for the purpose of offer for sale or solicitation or invitation to buy or subscribe any securities or in the context where its distribution may be construed as such offer, solicitation or invitation, in any such case except in compliance with any applicable exemption. The distribution of this document in or to persons subject to other jurisdictions may be restricted by law and persons into whose possession this document comes should inform themselves about, and observe, any such restrictions. Any failure to comply with these restrictions may constitute a violation of the laws of the relevant jurisdiction.



# TL-SO-19-16 “Chuditch” PSC: Moving Towards Appraisal

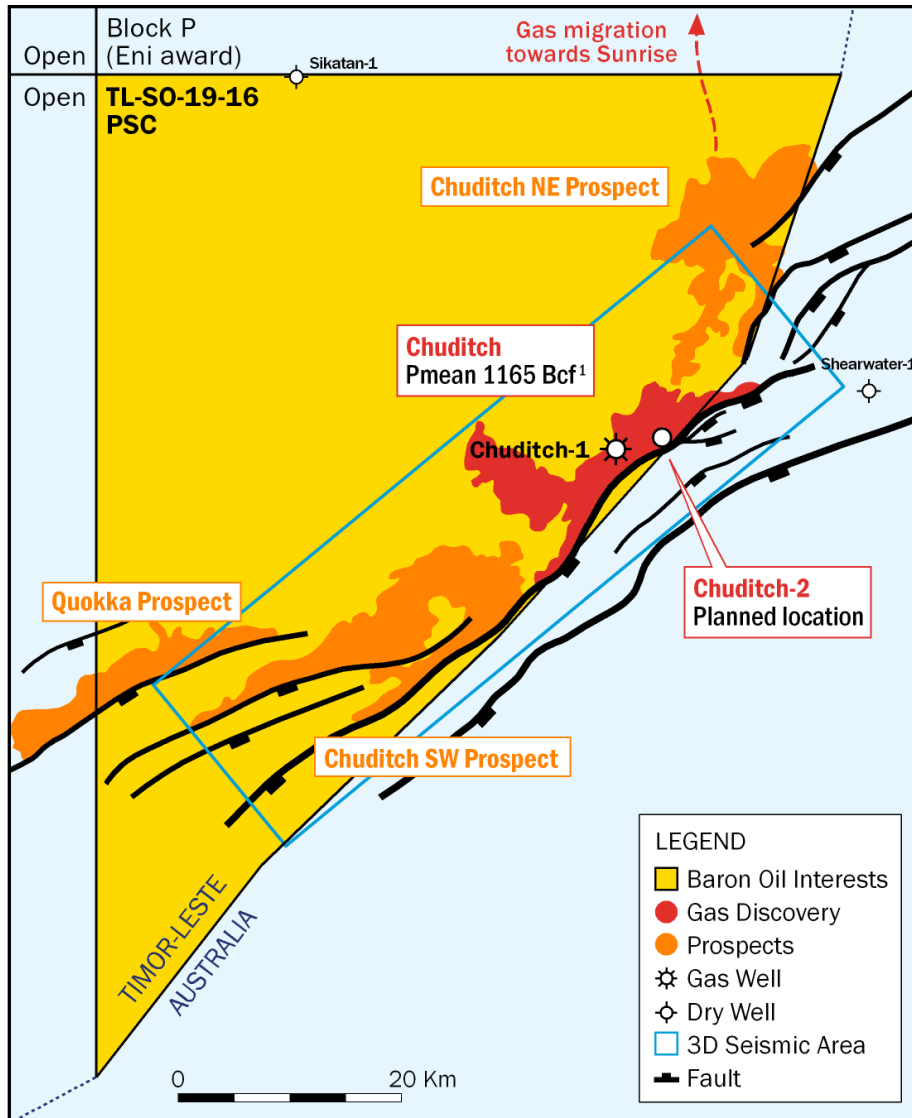


Baron (SundaGas) 75% operator; TIMOR GAP 25% (carried)

- Chuditch-1 drilled by Shell (1998) in 64m water
  - discovery lies in the heart of Plover gas trend
  - similar water depths to Bayu Undan
  - same good quality sandstone reservoirs
  - Chuditch now Timor-Leste’s 2<sup>nd</sup> largest field (Bayu Undan depleted)
- Evaluation status
  - completed extensive 3D seismic reprocessing and published CPR
    - ✓ gross Pmean Contingent Resources of 1.1 Tcf<sup>1</sup> gas
    - ✓ relatively low risk Pmean Prospective Resources of 2.1 Tcf<sup>2</sup> gas
  - **planning for Chuditch appraisal drilling**
  - evaluating gas development and export options



# Chuditch Next Steps: Appraising Significant Contingent Resources



## Appraisal Target:

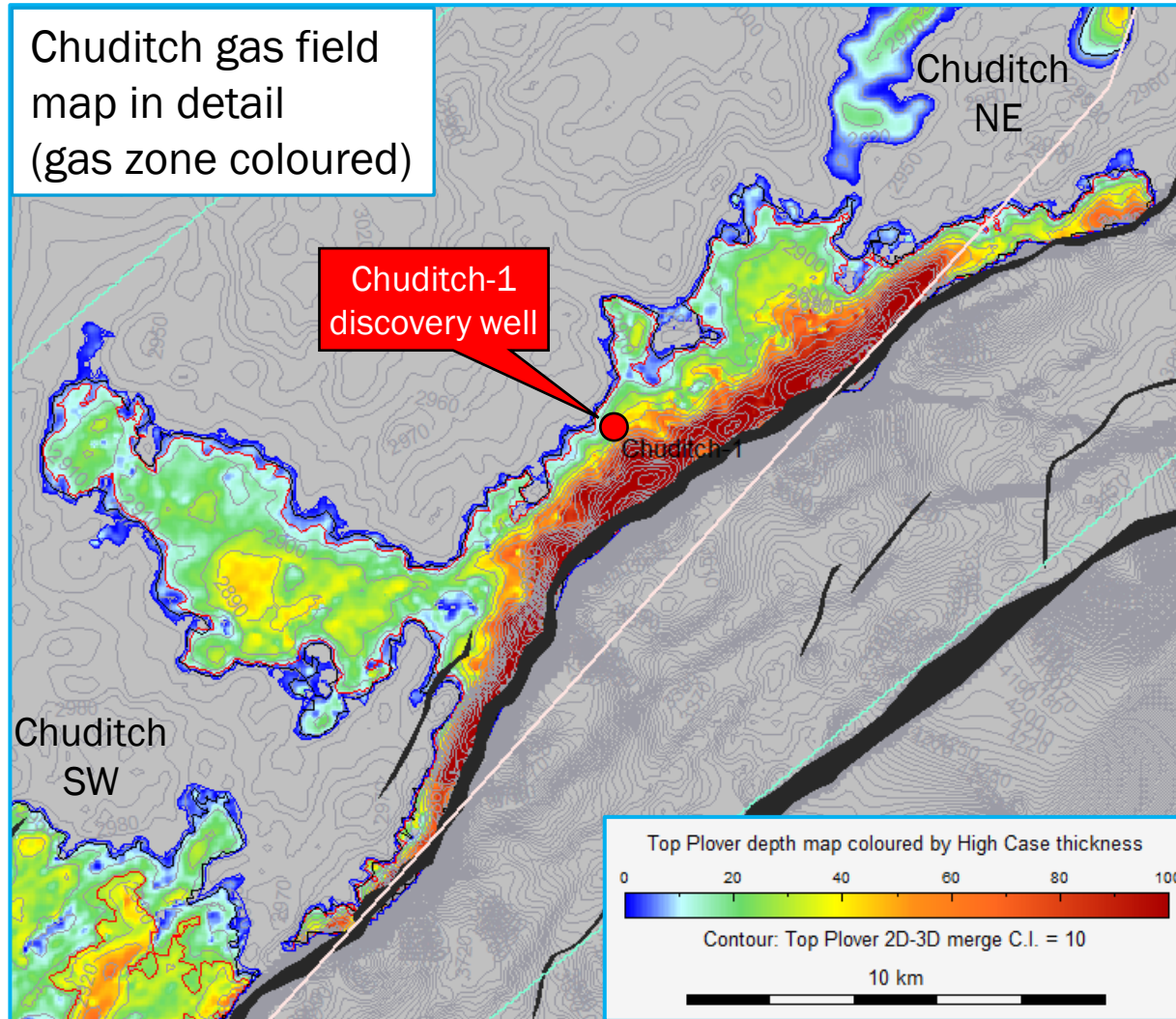
- **Chuditch Field**
  - large gas accumulation discovered by Shell in 1998
  - new 3D seismic reprocessing unveiled field geometry for first time
  - Contingent Pmean discovered gas resource = 1,165 Bcf<sup>1</sup>
  - planning appraisal drilling and production testing in 2024

## Additional Prospectivity

- **Chuditch NE Prospect**
  - ...enroute to Greater Sunrise, needs further 3D data
  - Prospective Pmean resource = 863 Bcf<sup>2</sup>, POSg = 34%<sup>2</sup>
- **Chuditch SW Prospect**
  - lower relief structure, several culminations
  - Prospective Pmean resource = 855 Bcf<sup>2</sup>, POSg = 40%<sup>2</sup>
- **Quokka Prospect**
  - simple structure, extends beyond 3D and off block
  - Prospective Pmean resource = 410 Bcf<sup>2</sup>, POSg = 26%<sup>2</sup>



# Chuditch Appraisal Drilling: Objectives and Well Selection Criteria



## Appraisal well objectives:

- Step-out from discovery to confirm gas resources
- Target >100m gas column (vs. 30m at Chuditch-1)
- Perform production flow test (DST)

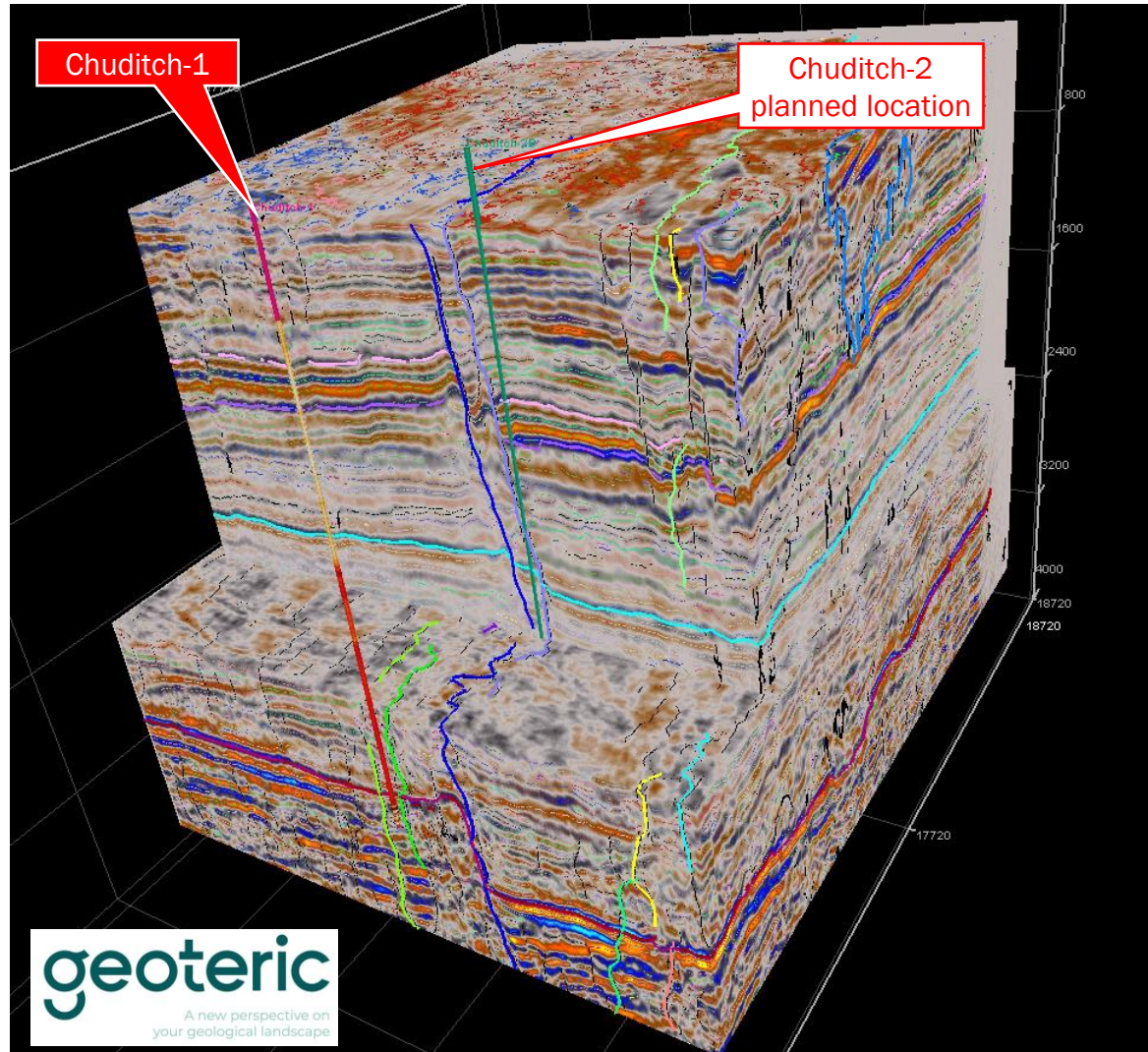
## Well location selection criteria:

- Distance from Chuditch-1
- Quality of seismic data at target
- Increased gas column predicted
- Low risk on presence of best reservoir
- Sufficient distance from Chuditch fault
- Low risk drilling trajectory
- Minimise faults along well path
- Water depth and slope





# AI Seismic Interpretation Assisted Well Location Selection



- AI / Machine-Learning technology deployed to assist in appraisal well selection
- Geoteric™ proprietary AI technology and software
- High fidelity fault and stratigraphic interpretation
- De-risks candidate locations...
  - identify and plan for faults encountered when drilling to target
  - avoid faults and potential damage zones in reservoir level
  - target areas where the high-quality reservoir interval in Chuditch-1 is preserved
  - assist with safe drilling planning

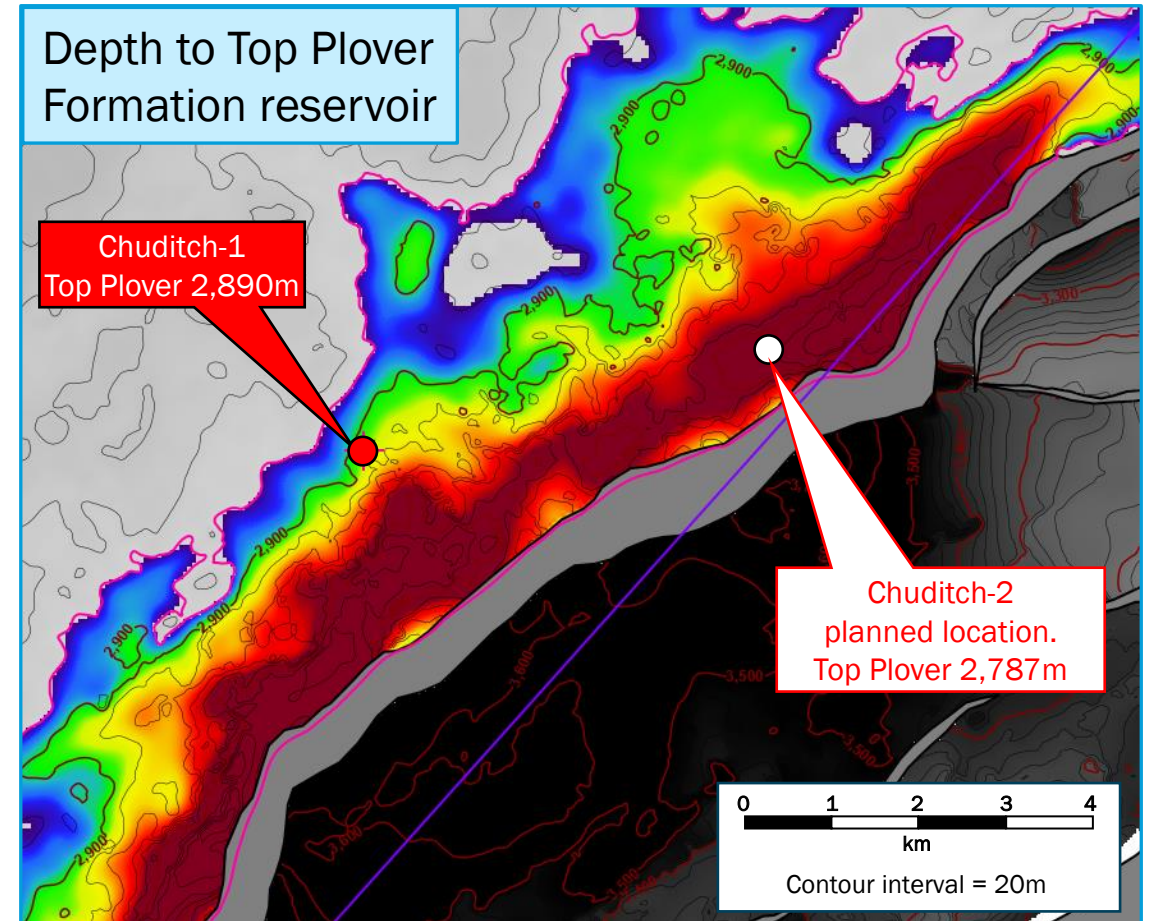
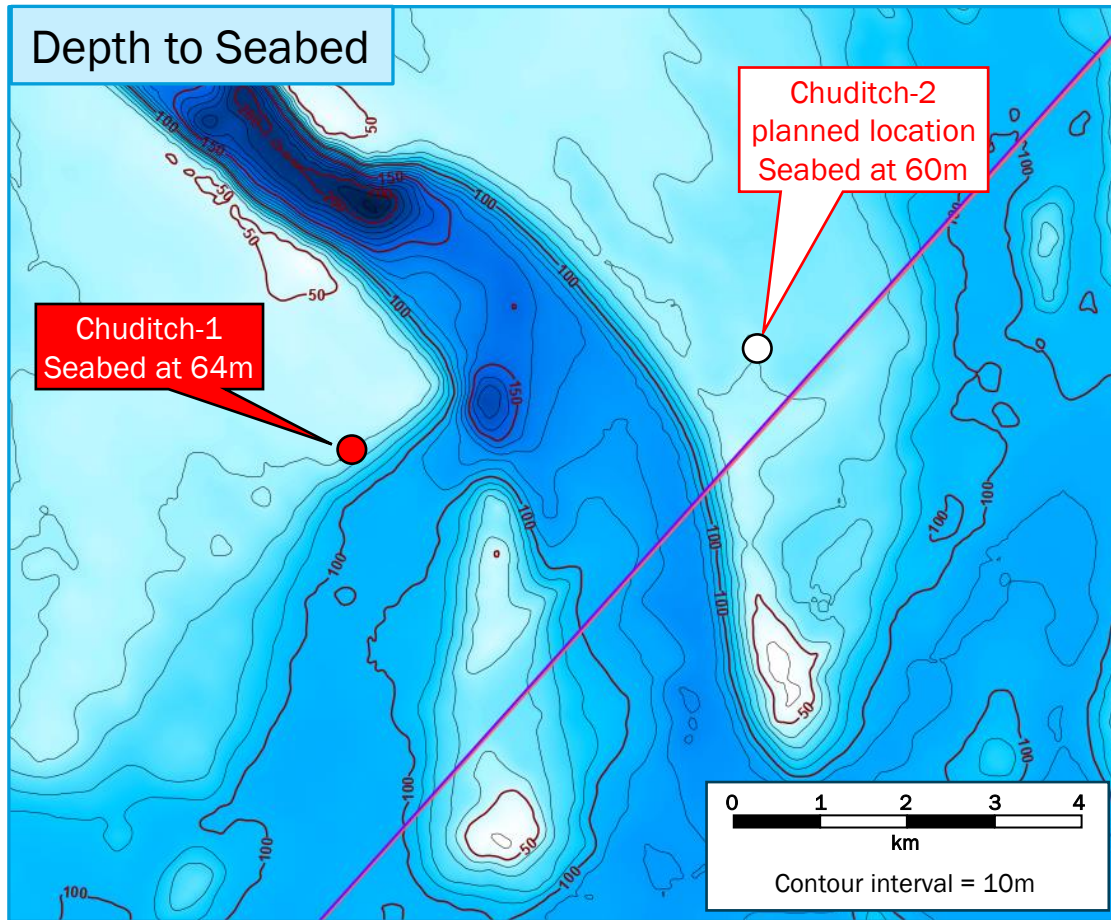
*3D seismic depth cube with conditioned filtered volumes (shallow and deep), illustrating AI-interpreted faults and seismic horizons*





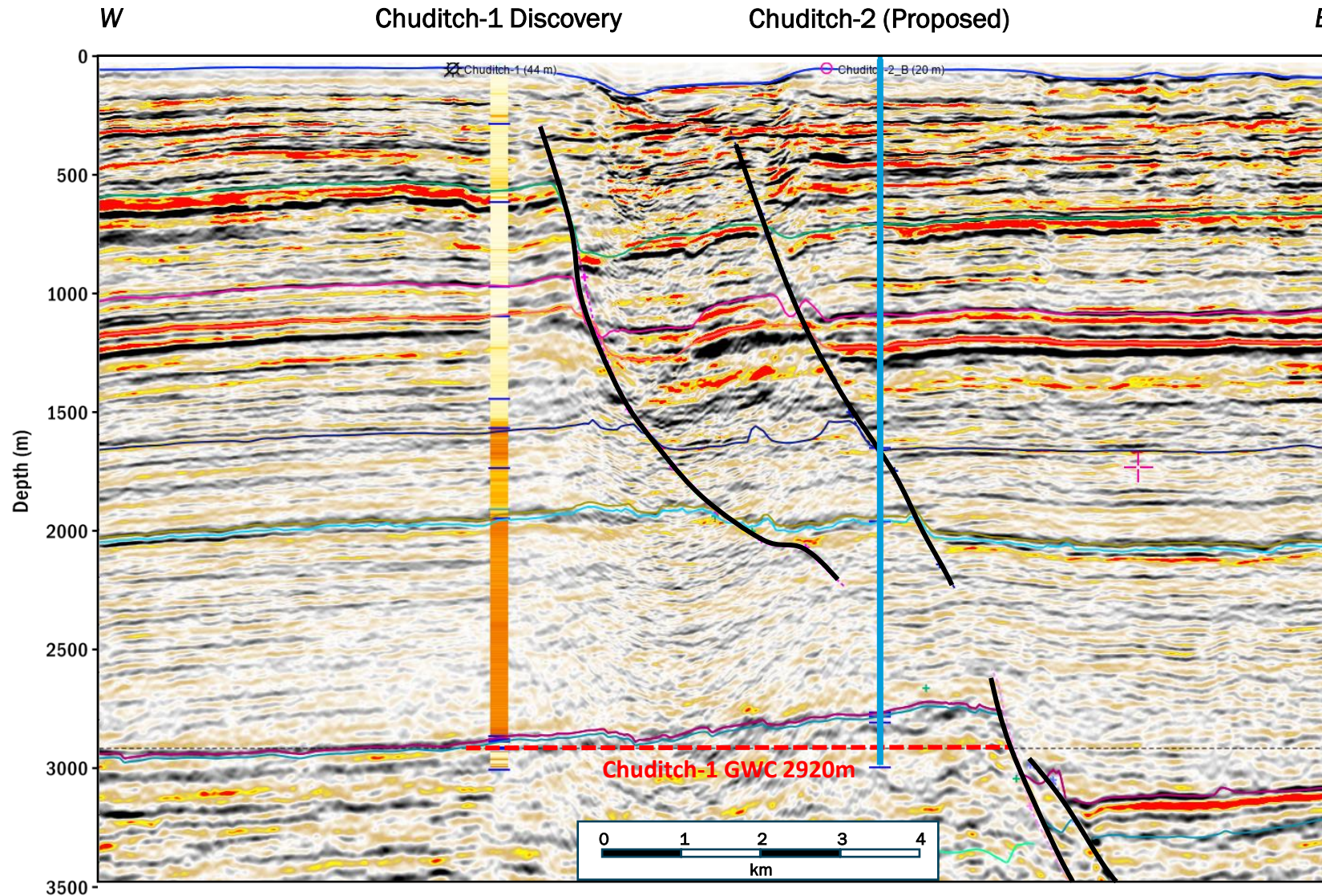
# Planned Location of Appraisal Well: A Substantial Step-Out

- Selected appraisal location is 4.8km from the Chuditch-1 discovery well, and 103m higher at reservoir
- Substantial step-out illustrates the size of the field and confidence in the reprocessed seismic datasets

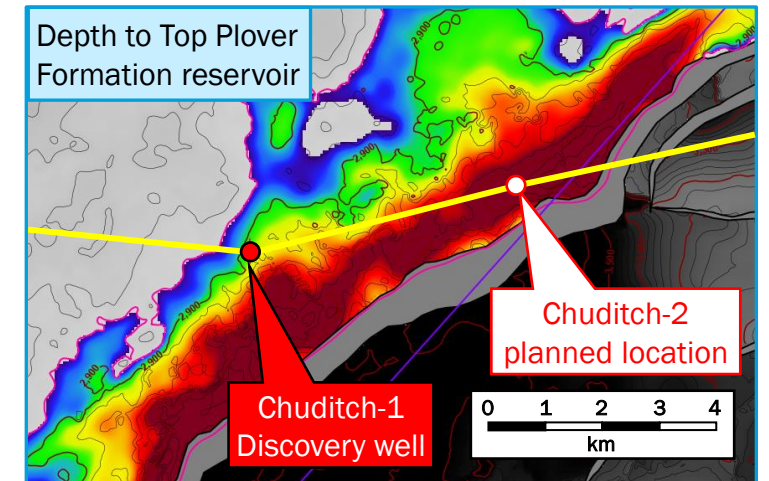




# 3D Seismic Line Tie from Chuditch-1 to Appraisal Well Location

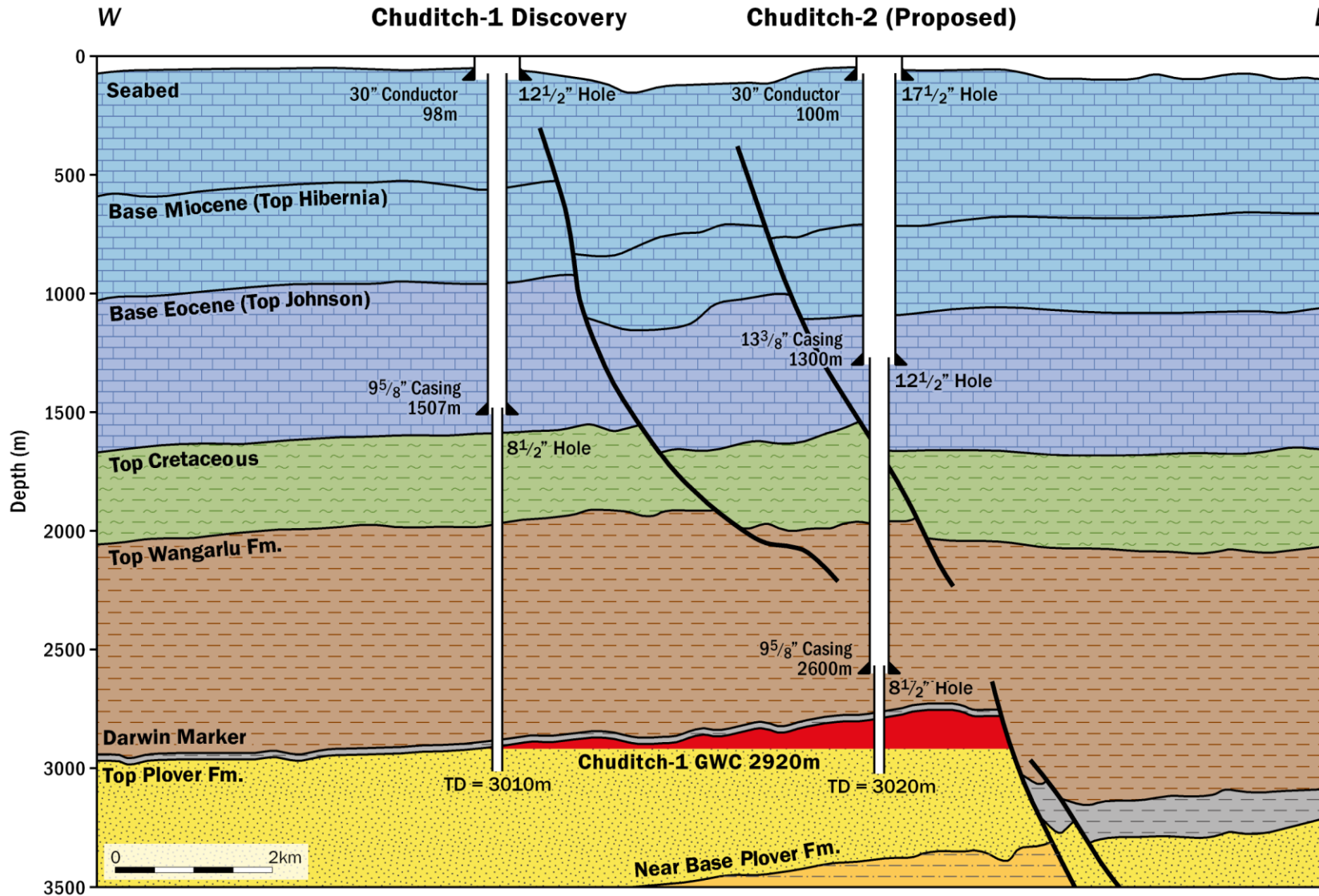


- Excellent imaging of Chuditch faults
- Good seismic correlation between Chuditch-1 and appraisal location
- Significant structural elevation above gas-water contact (GWC)
- Seabed channel effects largely removed at depth

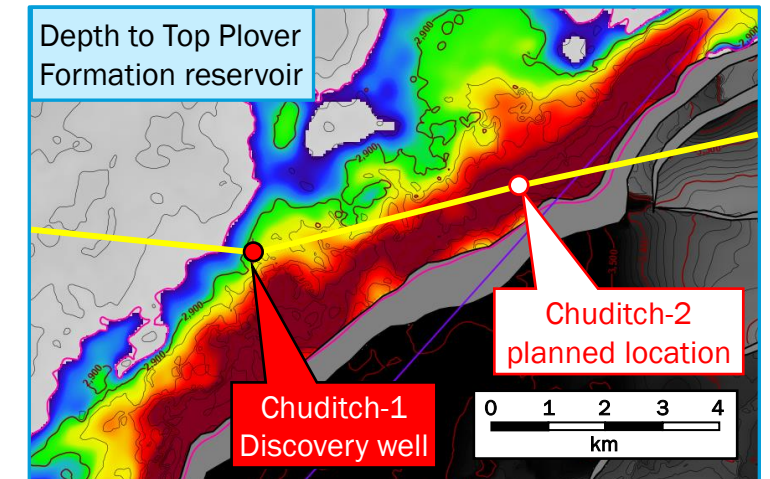




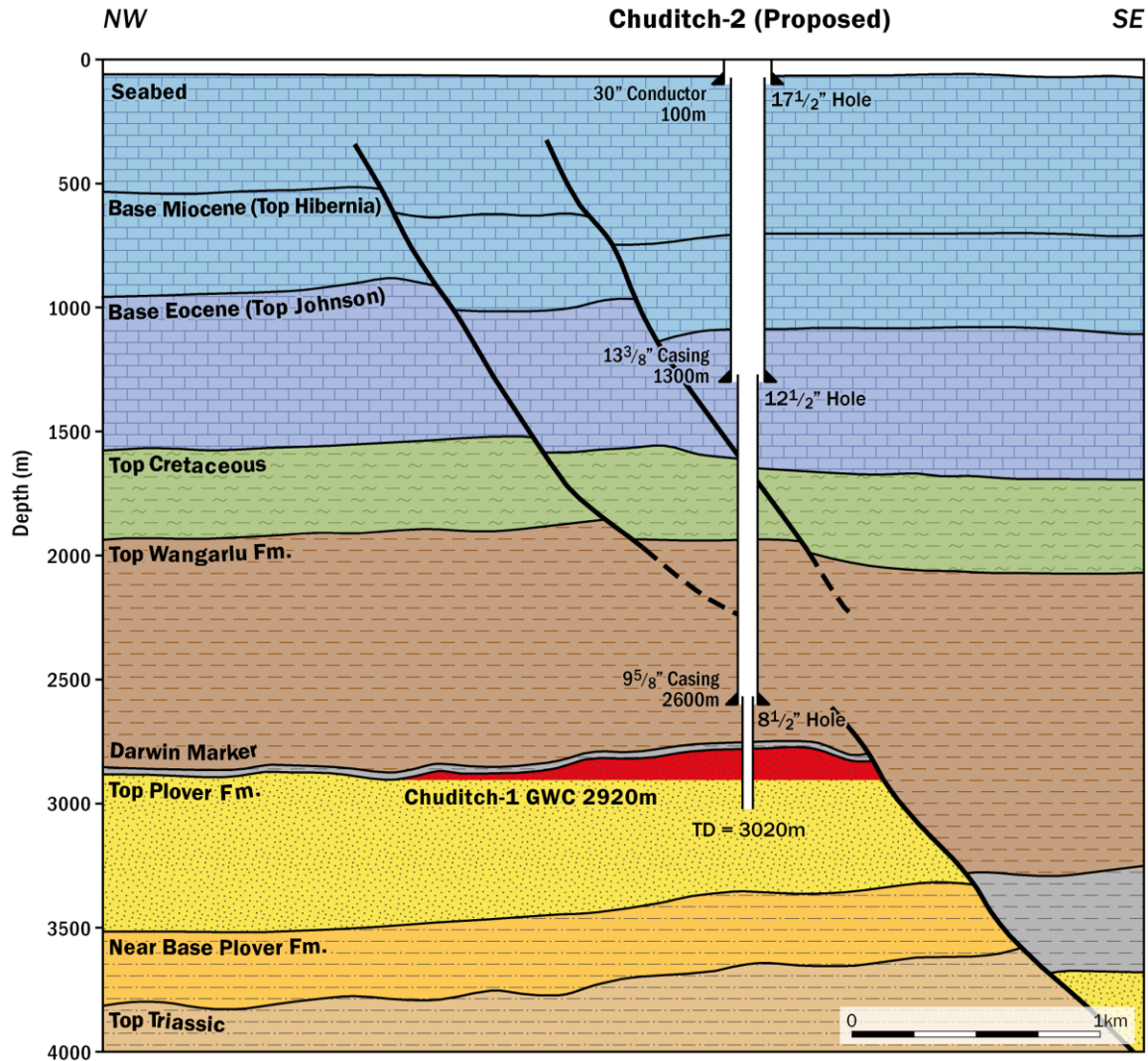
# Planned Appraisal Well Design



- Planned location is 4.8km from discovery well, in 60m water depth
- Top Plover reservoir expected 103m shallower than at Chuditch-1
- Simpler vertical well design enabled with improved 3D seismic imaging
- Detailed well design being reviewed
- Located away from fault at target to mitigate fault imaging uncertainty



# Chuditch Location: Planned Appraisal Well Summary



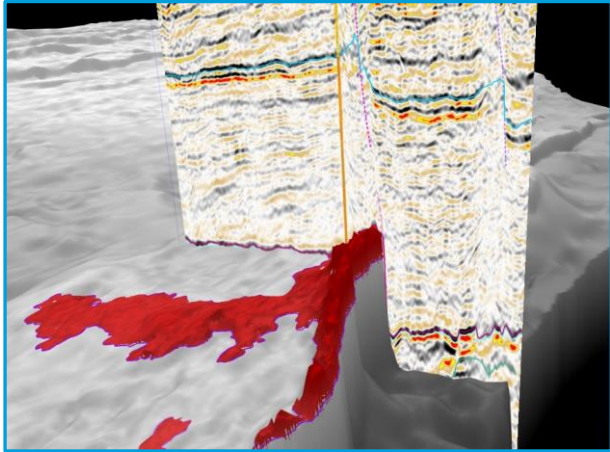
## Appraisal well location considerations:

- Distance from Chuditch-1 ✓ 4,800m
  - Quality of seismic data at target ✓ Very good
  - Increased gas column predicted ✓ 133m (vs. 30m)
  - Low risk on presence of best reservoir ✓ Yes
  - Sufficient distance from Chuditch fault ✓ >500m at target
  - Low risk drilling trajectory ✓ Vertical well
  - Minimise faults along well path ✓ Limited
  - Water depth and slope ✓ 60m, <1° slope
- 
- Drilling to total depth (3,020m) estimated to take c.21 days, with a further c.15 days for logging and testing (DST)

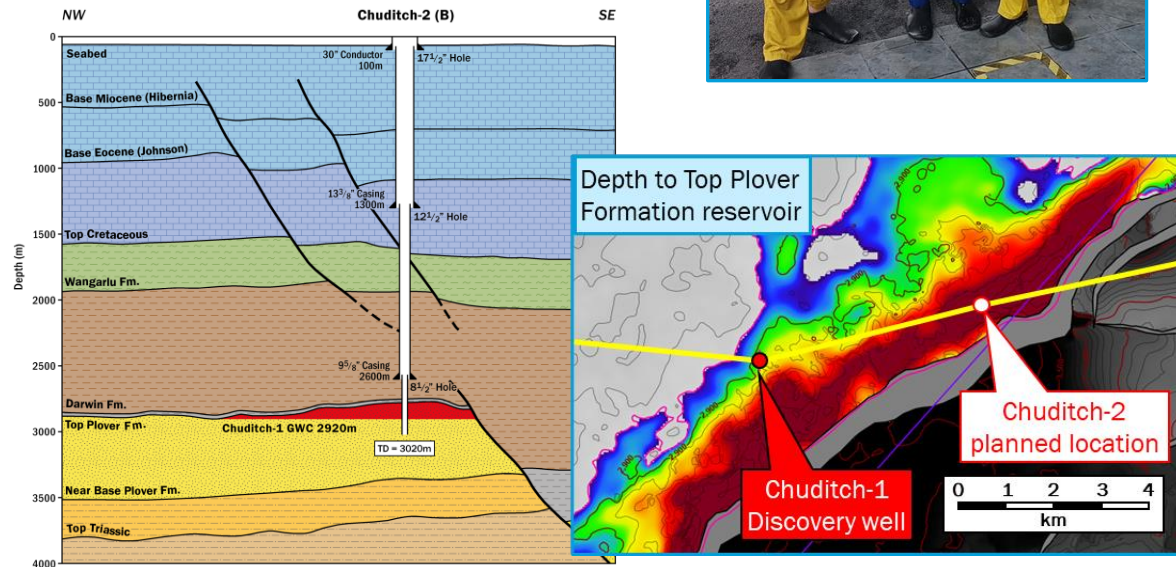




# Status of Well Operations Planning



- Recruited highly experienced Well Operations Manager
- Identified other key personnel for project execution
- Reviewing and updating well design and costs
- In discussions with rig owners and other contractors for deployment of suitable jack-up rig
- In discussions with other regional operators to identify potential logistical and operational cost-saving synergies
- Scheduled Drilling Planning Workshops with ANP and TIMOR GAP
- Providing offshore training to Timorese staff
- Submitted first phase documentation to ANP for environmental permits



# Glossary

| Term                                 | Definition   |
|--------------------------------------|--|
| 1C                                   | Denotes the low estimate qualifying as Contingent Resources. Reflects a volume estimate that there is a 90% probability that the quantities actually recovered will equal or exceed the estimate   |
| 1U                                   | Denotes the low estimate qualifying as Prospective Resources. Reflects a volume estimate that there is a 90% probability that the quantities actually recovered will equal or exceed the estimate  |
| 2C                                   | Denotes the mid estimate qualifying as Contingent Resources. Reflects a volume estimate that there is a 50% probability that the quantities actually recovered will equal or exceed the estimate   |
| 2U                                   | Denotes the mid estimate qualifying as Prospective Resources. Reflects a volume estimate that there is a 50% probability that the quantities actually recovered will equal or exceed the estimate  |
| 3C                                   | Denotes the high estimate qualifying as Contingent Resources. Reflects a volume estimate that there is a 10% probability that the quantities actually recovered will equal or exceed the estimate  |
| 3U                                   | Denotes the high estimate qualifying as Prospective Resources. Reflects a volume estimate that there is a 10% probability that the quantities actually recovered will equal or exceed the estimate   |
| Bcf                                  | Billion standard cubic feet of natural gas   |
| Chuditch PSC or PSC                  | Production Sharing Contract for offshore petroleum operations in Timor Leste, contract area TL-SO-19-16  |
| Contingent Resources                 | Those quantities of petroleum estimated, as of a given date, to be potentially recoverable from known accumulations by application of development projects, but which are not currently considered to be commercially recoverable owing to one or more contingencies   |
| DST                                  | drill stem test  |
| P <sub>mean</sub> or Mean            | Reflects a mid-case volume estimate of resource derived using probabilistic methodology. This is the mean of the probability distribution for the resource estimates and may be skewed by resource numbers with relatively low probabilities   |
| POSG or Geological Chance of Success | The geological chance of success is an estimate of the probability that drilling the prospect would result in a discovery as defined under SPE PRMS guidelines   |
| Prospective Resources                | Quantities of petroleum that are estimated to exist originally in naturally occurring reservoirs, as of a given date. Crude oil in-place, natural gas in-place, and natural bitumen in-place are defined in the same manner  |
| SPE PRMS                             | The Society of Petroleum Engineers' ("SPE") Petroleum Resources Management System ("PRMS"): a system developed for consistent and reliable definition, classification, and estimation of hydrocarbon resources prepared by the Oil and Gas Reserves Committee of SPE and approved by the SPE Board in June 2018 following input from six sponsoring societies: the World Petroleum Council, the American Association of Petroleum Geologists, the Society of Petroleum Evaluation Engineers, the Society of Exploration Geophysicists, the European Association of Geoscientists and Engineers, and the Society of Petrophysicists and Well Log Analysts |
| Tcf                                  | Trillion standard cubic feet of natural gas  |

