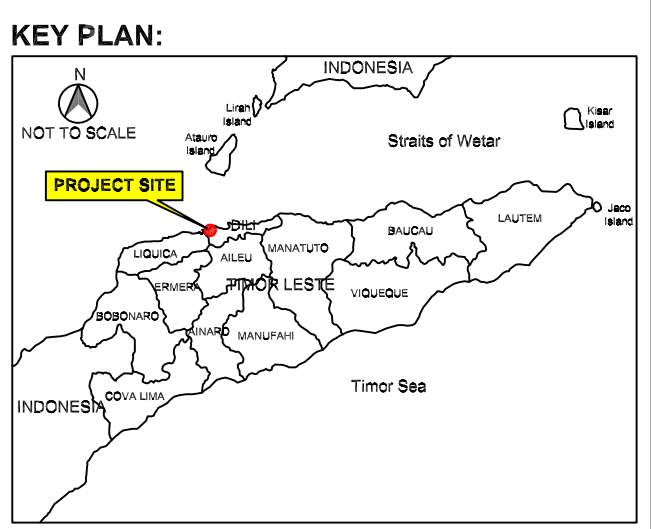
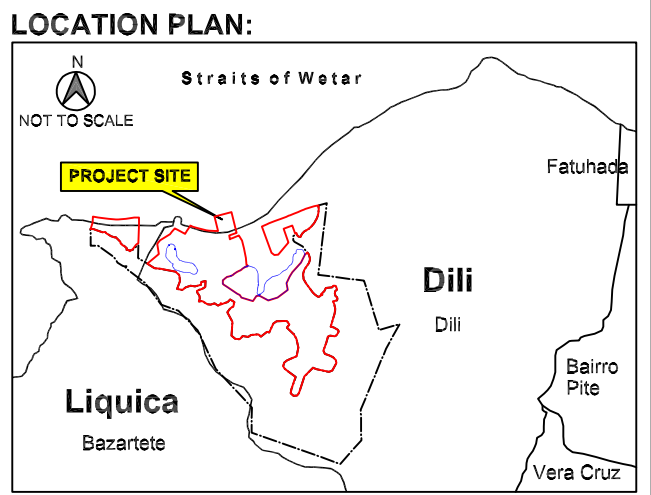


LEGEND:

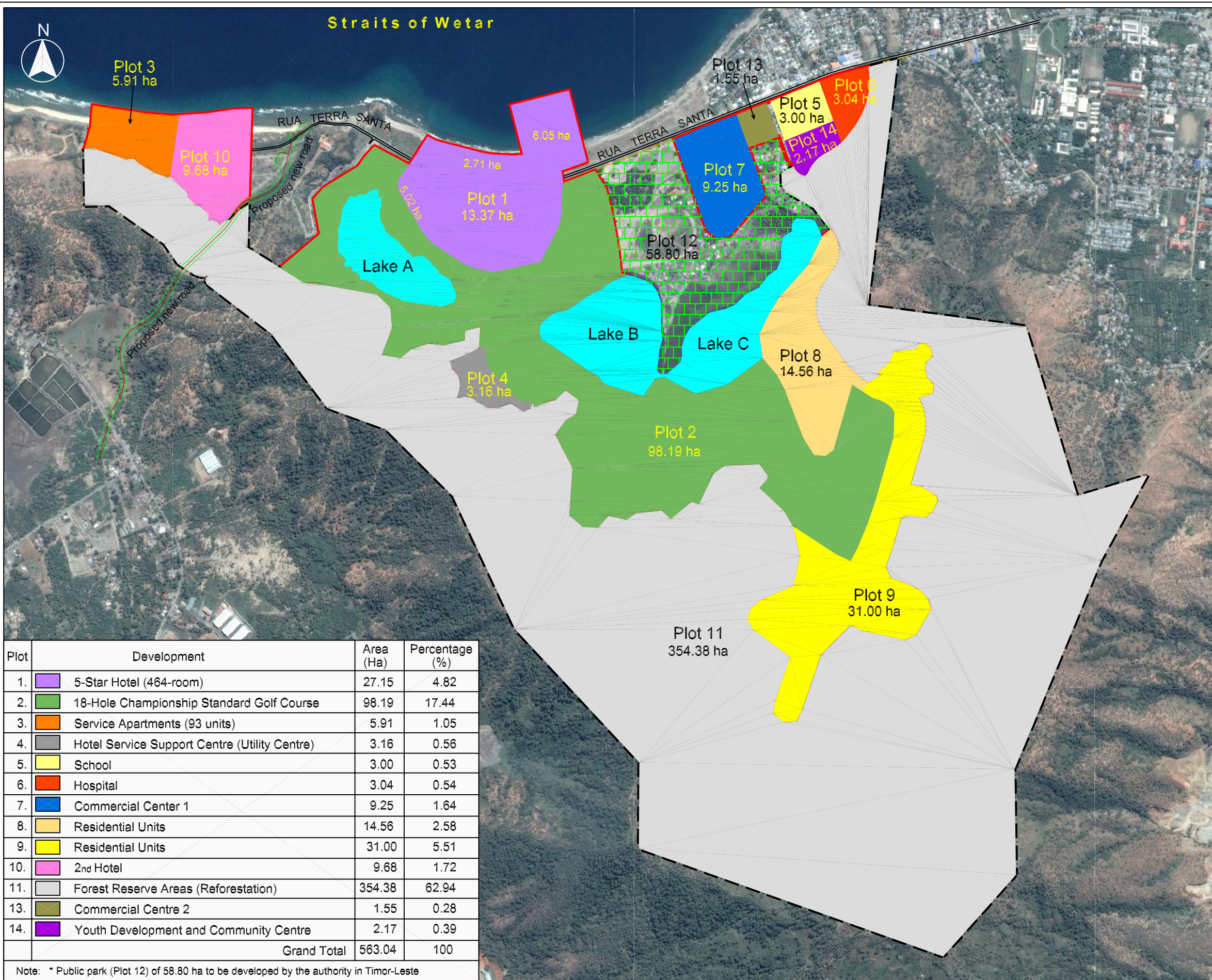
- Project Site
- Development Area
- Reserve Area
- Road
- River

DATA SOURCE:

(1) Google Earth Map, Imagery date: 30 October 2016, Accessed date: December 2016.
 (2) Pelican Master Development Plan, Drawing No.: PPHT/REM/PPRC/MDP-01-00, 21 March 2017.



Point	Coordinate	
	Latitude (S)	Longitude (E)
1	8.554446°	125.516236°
2	8.562661°	125.515302°
3	8.563319°	125.520584°
4	8.568247°	125.524703°
5	8.581586°	125.520381°
6	8.584323°	125.517962°
7	8.580791°	125.507756°
8	8.569097°	125.501453°
9	8.559511°	125.489082°
10	8.556161°	125.489312°



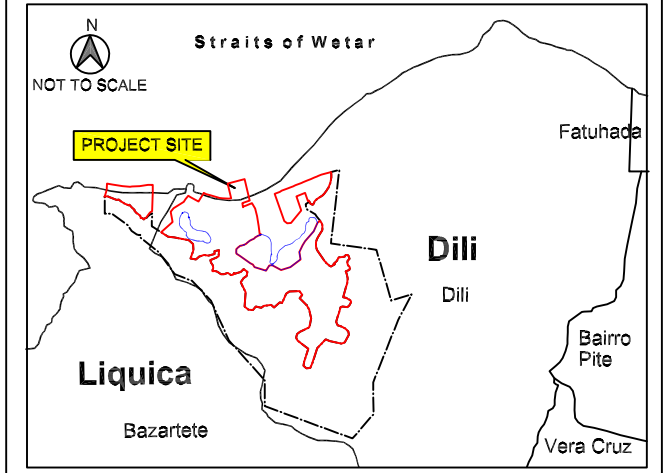
LEGEND:

- Project Site
- Development Area
- Reserve Area
- Lake
- Road
- Proposed New Road

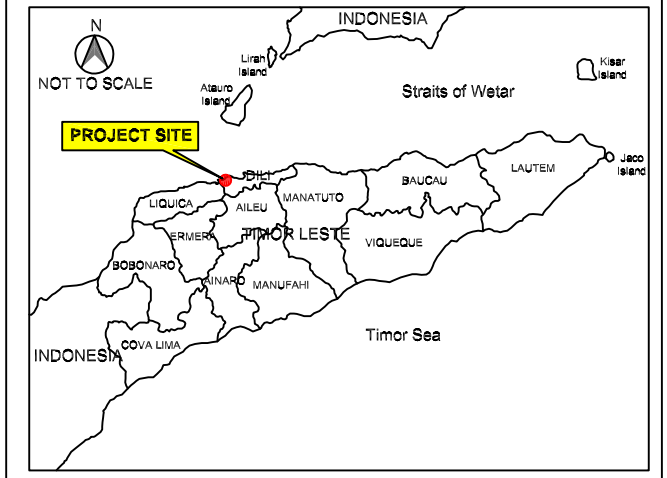
DATA SOURCE:

- (1) Google Earth Map, Imagery date: 30 October 2016, Accessed date: December 2016.
- (2) Pelican Master Development Plan, Drawing No.: PPHT/REM/PPRC/MDP-01-00, 21 March 2017.

LOCATION PLAN:



KEY PLAN:



Plot	Development	Area (Ha)	Percentage (%)
1.	5-Star Hotel (464-room)	27.15	4.82
2.	18-Hole Championship Standard Golf Course	98.19	17.44
3.	Service Apartments (93 units)	5.91	1.05
4.	Hotel Service Support Centre (Utility Centre)	3.16	0.56
5.	School	3.00	0.53
6.	Hospital	3.04	0.54
7.	Commercial Center 1	9.25	1.64
8.	Residential Units	14.56	2.58
9.	Residential Units	31.00	5.51
10.	2nd Hotel	9.68	1.72
11.	Forest Reserve Areas (Reforestation)	354.38	62.94
13.	Commercial Centre 2	1.55	0.28
14.	Youth Development and Community Centre	2.17	0.39
Grand Total		563.04	100

Note: * Public park (Plot 12) of 58.80 ha to be developed by the authority in Timor-Leste

PROJECT PROPONENT:

ENVIRONMENTAL CONSULTANT:

PROJECT TITLE:

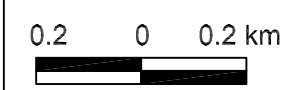
SCALE:

DRAWING TITLE:

PAGE NO:



**ENVIRONMENTAL MANAGEMENT PLAN
FOR PROPOSED PELICAN PARADISE DEVELOPMENT,
TIBAR-TASI TOLU, TIMOR-LESTE**



PROJECT MASTERPLAN

1-34

DRAWING NO: **FIGURE 1.4.2** DATE: **MAY '17**



Straits of Wetar



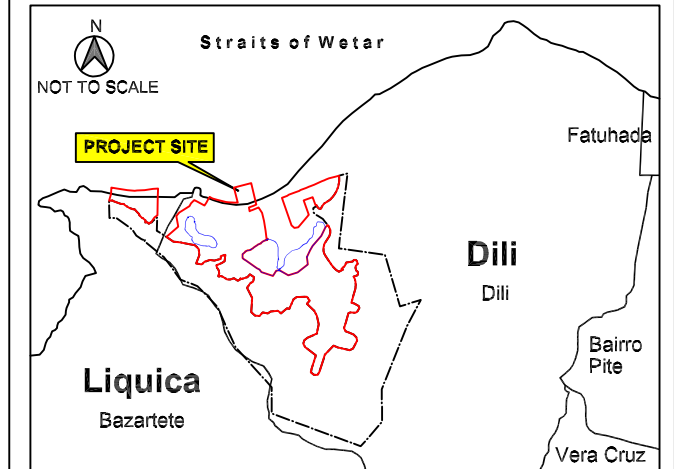
LEGEND:

- Project Site
- Development Area
- Reserve Area
- Road
- River
- Lake Water Sampling Points (LW1 - LW3)
- Sea Water Sampling Points (SW1 - SW4)
- Jetty Water Sampling Points (JW1 - JW4)
- Air and Noise Level Measurement Points (AN1, AN3 and AN5)
- Zooplankton and Phytoplankton Sampling Points (B1 - B3)

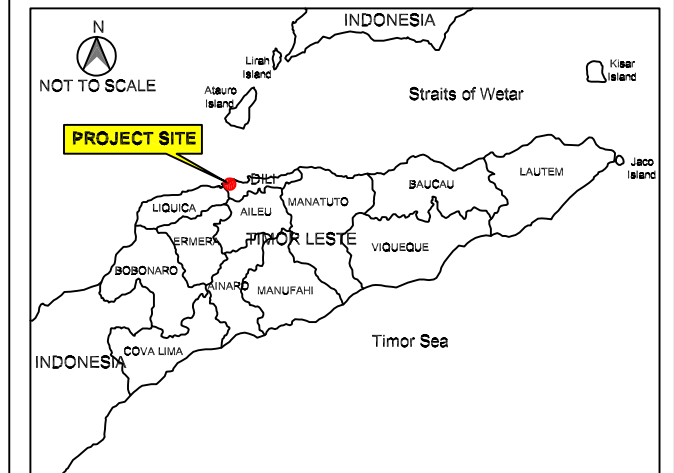
DATA SOURCE:

(1) Google Earth Map, Imagery date: 30 October 2016, Accessed date: December 2016.

LOCATION PLAN:



KEY PLAN:



Point	Coordinate	
	Latitude (S)	Longitude (E)
SW1/B1	8.54759°	125.51584°
SW2/B2	8.55638°	125.50647°
SW3/B3	8.55572°	125.48918°
SW4	8.55505°	125.49918°
LW1	8.56623°	125.51079°
LW2	8.56587°	125.50720°
LW3	8.56198°	125.49990°
JW1	8.55577°	125.50344°
JW2	8.55526°	125.50543°
JW3	8.55703°	125.50587°
JW4	8.55743°	125.50388°
AN1	8.56014°	125.51417°
AN3	8.55946°	125.49766°
AN5	8.56853°	125.51466°



Straits of Wetar



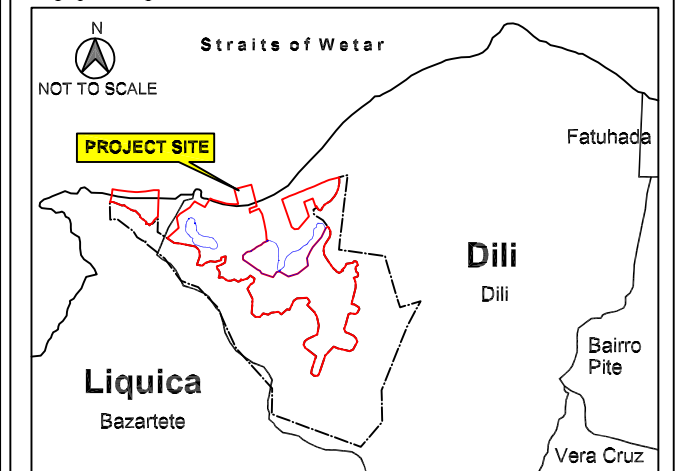
LEGEND:

- Project Site
- Development Area
- Road
- River
- Lake Water Sampling Points (LW1 - LW3)
- Sea Water Sampling Points (SW1 - SW4)
- Zooplankton and Phytoplankton Sampling Points (B1 - B3)
- Groundwater Sampling Points (GW1 - GW2)

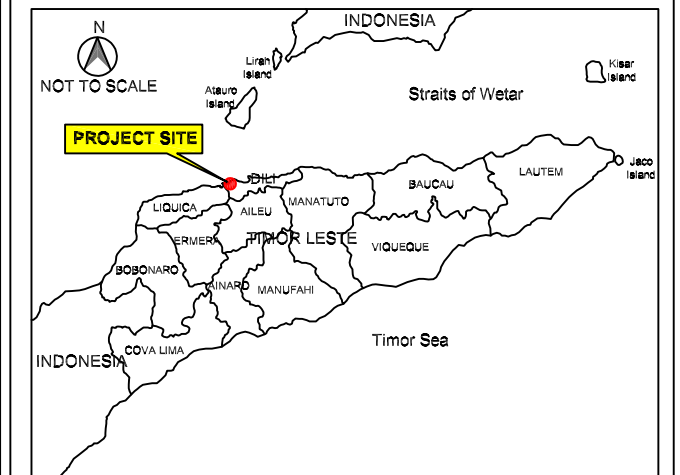
DATA SOURCE:

(1) Google Earth Map, Imagery date: 30 October 2016, Accessed date: December 2016.

LOCATION PLAN:



KEY PLAN:



Point	Coordinate	
	Latitude (S)	Longitude (E)
SW1/B1	8.54759°	125.51584°
SW2/B2	8.55638°	125.50647°
SW3/B3	8.55572°	125.48918°
SW4	8.55505°	125.49918°
LW1	8.56623°	125.51079°
LW2	8.56587°	125.50720°
LW3	8.56198°	125.49990°



Straits of Wetar

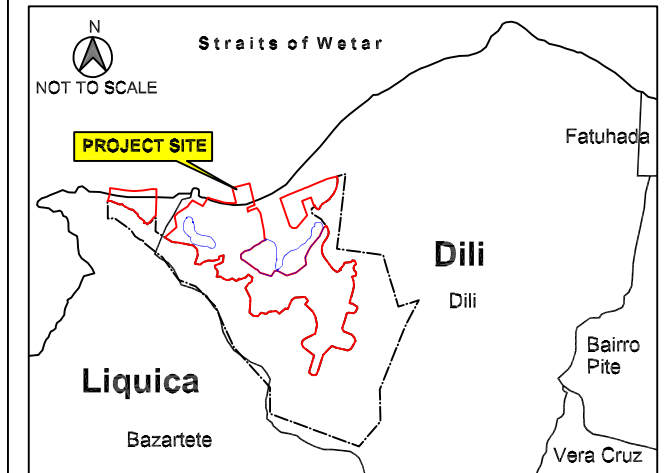
LEGEND:

- Development Area
- Reserve Area
- Road
- River
- Coral Survey Line (T1 - T8)

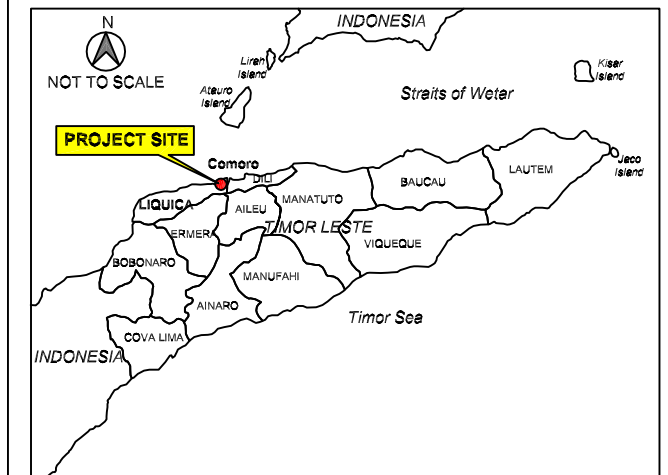
DATA SOURCE:

(1) Google Earth Map, Imagery date: 30 October 2016, Accessed date: December 2016.

LOCATION PLAN:



KEY PLAN:



Point	Coordinate	
	Latitude (S)	Longitude (E)
T1	8.55743°	125.50452°
T2	8.55678°	125.50447°
T3	8.55722°	125.50043°
T4	8.55588°	125.50070°
T5	8.55450°	125.48945°
T6	8.55477°	125.48993°
T7	8.55547°	125.49722°
T8	8.55527°	125.49807°

PROJECT SITE

PROJECT PROPONENT:



ENVIRONMENTAL CONSULTANT:



PROJECT TITLE:

**ENVIRONMENTAL MANAGEMENT PLAN
FOR PROPOSED PELICAN PARADISE DEVELOPMENT,
TIBAR-TASI TOLU, TIMOR-LESTE**

SCALE:



DRAWING TITLE:

**PROPOSED TRANSECT LOCATIONS FOR CORAL SURVEY
FOR CONSTRUCTION AND OPERATIONAL PHASES**

DRAWING NO:

FIGURE 1.10.3

PAGE NO:

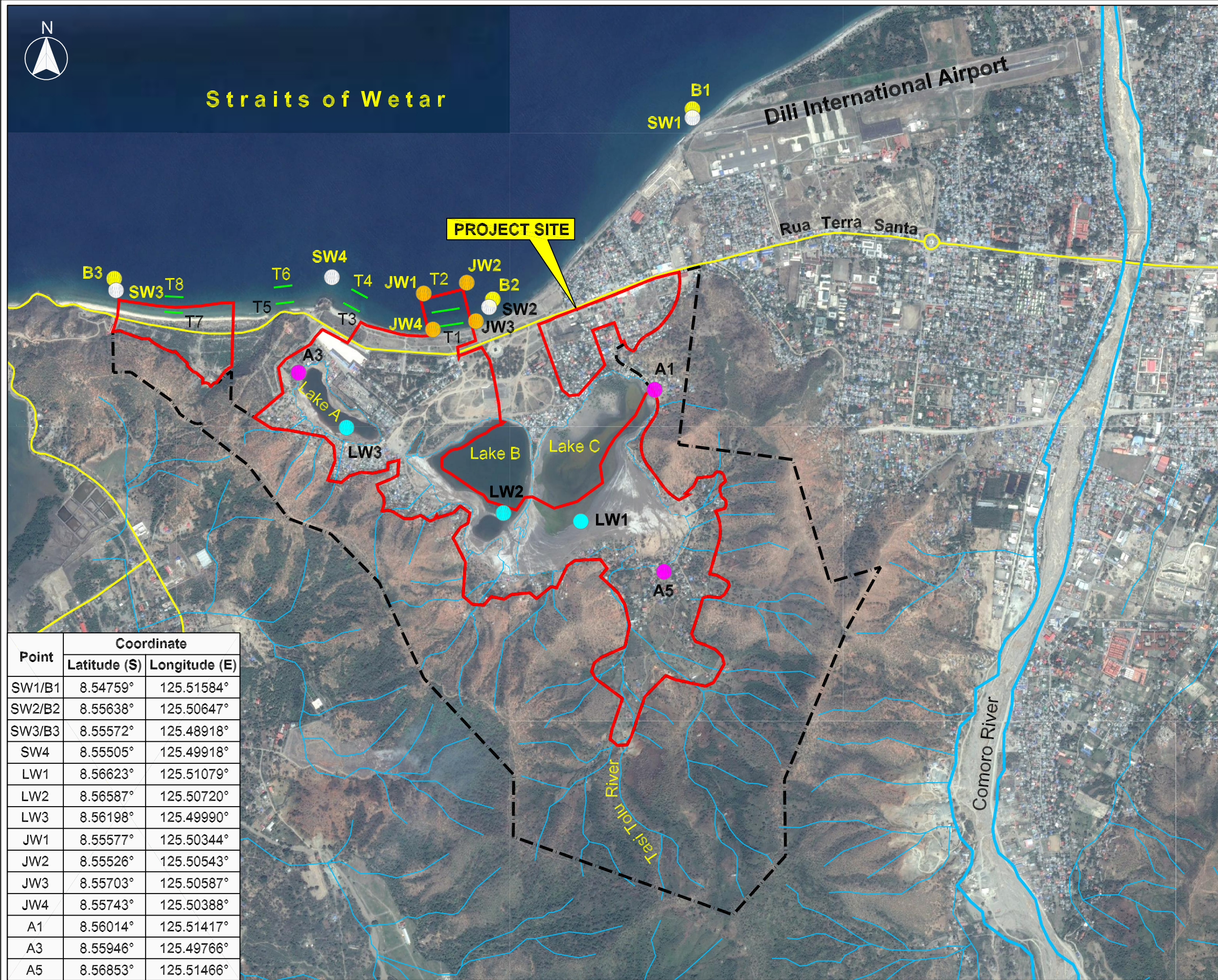
1-37

DATE:

MAY '17



Straits of Wetar



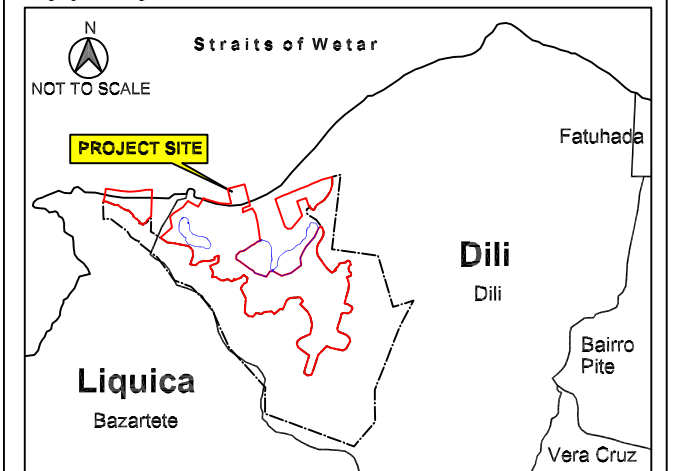
LEGEND:

- Project Site
- Development Area
- Reserve Area
- Road
- River
- Coral Survey Line (T1 - T8)
- Lake Water Sampling Points (LW1 - LW3)
- Sea Water Sampling Points (SW1 - SW4)
- Jetty Water Sampling Points (JW1 - JW4)
- Air Quality Sampling Points (A1, A3 and A5)
- Zooplankton and Phytoplankton Sampling Points (B1 - B3)

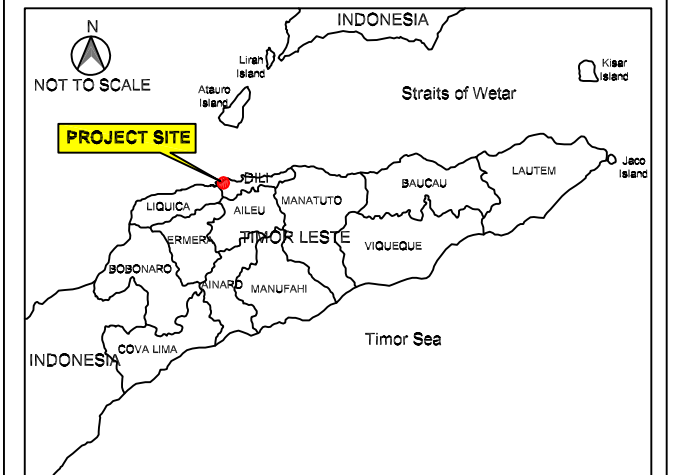
DATA SOURCE:

(1) Google Earth Map, Imagery date: 30 October 2016, Accessed date: December 2016.

LOCATION PLAN:



KEY PLAN:



Point	Coordinate	
	Latitude (S)	Longitude (E)
SW1/B1	8.54759°	125.51584°
SW2/B2	8.55638°	125.50647°
SW3/B3	8.55572°	125.48918°
SW4	8.55505°	125.49918°
LW1	8.56623°	125.51079°
LW2	8.56587°	125.50720°
LW3	8.56198°	125.49990°
JW1	8.55577°	125.50344°
JW2	8.55526°	125.50543°
JW3	8.55703°	125.50587°
JW4	8.55743°	125.50388°
A1	8.56014°	125.51417°
A3	8.55946°	125.49766°
A5	8.56853°	125.51466°