

## APPENDIX TABLES

### Appendix Table 1. Real GDP Growth

percent change from a year earlier

	China	Indonesia	Malaysia	Philippines	Thailand	Vietnam	Hong Kong SAR, China	Korea, Rep.	Singapore	Taiwan, China	East Asia and Pacific
Q1-2002	8.9	3.5	2.7	4.2	4.5	..	-1.0	6.6	-0.8	1.6	..
Q2-2002	8.0	4.2	4.7	4.6	5.0	..	0.5	7.0	4.6	6.5	..
Q3-2002	8.1	5.6	7.1	3.3	5.8	..	2.8	6.8	6.8	6.8	..
Q4-2002	8.1	4.7	6.9	5.5	6.0	..	4.8	8.1	6.5	6.0	..
Q1-2003	10.8	4.9	6.3	4.8	6.9	..	4.1	3.5	4.3	4.7	..
Q2-2003	7.9	5.0	5.9	4.3	6.6	..	-0.9	1.8	-0.6	-1.3	..
Q3-2003	9.6	4.6	4.6	5.4	6.7	..	3.8	2.0	5.4	4.6	..
Q4-2003	9.9	4.6	6.5	5.1	8.3	..	4.7	3.9	9.2	6.4	..
Q1-2004	10.4	4.1	8.2	7.2	6.7	..	7.7	5.2	10.0	6.1	..
Q2-2004	9.6	4.4	7.9	7.1	6.6	..	12.0	5.9	12.9	9.7	..
Q3-2004	9.1	4.5	6.4	5.6	6.3	..	6.6	4.8	7.7	6.7	..
Q4-2004	9.5	7.2	4.9	5.8	5.9	..	7.9	2.7	6.7	2.9	..
Q1-2005	10.5	6.0	5.6	4.5	3.6	7.4	6.2	2.7	4.7	2.7	7.0
Q2-2005	10.1	5.9	4.3	5.1	4.7	7.8	7.1	3.4	6.2	4.0	7.2
Q3-2005	9.8	5.8	5.6	4.7	5.5	8.3	8.1	4.5	8.7	4.8	7.5
Q4-2005	9.9	5.1	5.9	5.4	4.7	8.4	6.9	5.1	9.7	7.0	7.8
Q1-2006	12.4	5.1	6.0	5.5	6.1	7.3	9.0	6.1	10.7	5.8	9.4
Q2-2006	11.5	4.9	6.1	5.3	5.1	7.4	6.1	5.1	8.6	5.8	8.5
Q3-2006	10.6	5.9	5.8	5.2	4.8	7.9	6.4	5.0	8.0	6.5	8.1
Q4-2006	10.4	6.1	5.4	5.4	4.4	8.2	6.7	4.6	7.6	3.8	7.7
Q1-2007	14.0	6.1	5.7	6.8	4.6	7.7	5.6	4.5	7.9	4.5	9.6
Q2-2007	13.8	6.7	5.9	8.3	4.6	7.8	6.1	5.3	9.8	5.7	9.9
Q3-2007	13.4	6.7	6.8	6.8	5.5	8.2	6.8	4.9	11.0	7.1	9.9
Q4-2007	12.1	5.8	7.5	6.5	5.4	8.5	6.9	5.7	6.5	6.5	9.2
Q1-2008	11.3	6.2	7.5	3.9	6.3	7.5	7.2	5.5	7.6	7.5	8.9
Q2-2008	10.1	6.3	6.7	5.7	5.2	6.5	4.2	4.4	2.7	5.7	7.6
Q3-2008	9.0	6.3	5.1	6.4	3.1	6.3	1.2	3.3	-0.5	-1.2	5.9
Q4-2008	6.8	5.3	0.2	2.8	-4.1	6.2	-2.6	-3.3	-3.4	-7.5	2.4
Q1-2009	6.5	4.6	-6.2	1.0	-7.0	3.1	-7.9	-4.2	-8.4	-8.6	1.4
Q2-2009	8.1	4.2	-3.9	1.6	-5.2	3.9	-3.4	-2.1	-1.3	-7.2	3.2
Q3-2009	9.6	4.2	-1.2	0.5	-2.8	4.6	-2.1	1.0	2.1	-1.2	5.3
Q4-2009	10.7	5.4	4.6	1.4	5.9	5.5	2.5	6.3	4.6	9.2	8.4
Q1-2010	11.9	5.6	10.1	8.4	12.0	5.9	8.0	8.5	16.4	13.6	11.0
Q2-2010	10.3	6.1	9.0	8.9	9.2	6.2	6.7	7.5	19.4	12.9	9.8
Q3-2010	9.6	5.8	5.3	7.3	6.6	6.6	6.9	4.4	10.5	10.7	8.3
Q4-2010	9.8	6.9	4.8	6.1	3.8	6.8	6.4	4.7	12.0	7.1	8.1
Q1-2011	9.7	6.5	4.9	4.6	3.2	5.4	7.5	4.2	9.3	6.2	7.8
Q2-2011	9.5	6.5	4.0	3.4	2.6	5.6	5.1	3.4	1.0	5.0	7.1
Q3-2011	9.1	6.5				5.8	4.3	3.4	5.9	3.4	

Sources: Haver Analytics and national sources. Data for China uses annual production side GDP.

**Appendix Table 2. Real GDP and Components of Aggregate Demand**

percent change from a year earlier

		Indonesia	Malaysia	Philippines	Thailand	Hong Kong SAR, China	Korea, Rep.	Singapore	Taiwan, China	S.E. Asia	NIEs
GDP	2005	5.7	5.3	5.0	4.6	7.1	4.0	7.4	4.7	5.2	4.9
	2006	5.5	5.8	5.3	5.1	7.0	5.2	8.7	5.4	5.4	5.8
	2007	6.3	6.5	7.1	5.0	6.4	5.1	8.8	6.0	6.1	5.9
	2008	6.0	4.8	4.6	2.5	2.3	2.3	1.5	0.7	4.6	1.8
	2009	4.6	-1.6	1.1	-2.3	-2.7	0.3	-0.8	-1.9	1.0	-0.8
	2010	6.1	7.2	7.6	7.8	7.0	6.2	14.5	10.9	7.0	8.3
	2011 Q1	6.5	4.9	4.6	3.2	7.5	4.2	9.3	6.2	5.0	5.7
	2011 Q2	6.5	4.0	3.4	2.6	5.1	3.4	0.9	5.0	4.5	3.9
Private Consumption	2005	4.0	9.1	4.8	4.6	3.0	4.6	3.6	2.9	5.3	3.8
	2006	3.2	6.8	5.5	3.2	5.9	4.7	3.5	1.5	4.3	3.9
	2007	5.0	10.5	5.8	1.8	8.5	5.1	6.4	2.1	5.4	4.9
	2008	5.3	8.7	2.7	2.9	2.4	1.3	3.2	-0.9	5.0	1.0
	2009	4.9	0.7	2.3	-1.1	0.7	0.0	0.2	1.1	2.1	0.4
	2010	4.6	6.5	3.4	4.8	6.2	4.1	4.2	3.7	4.8	4.3
	2011 Q1	4.5	6.7	5.3	3.3	8.0	2.8	6.1	4.4	4.8	4.3
	2011 Q2	4.6	6.4	5.4	2.8	9.2	3.0	6.6	3.1	4.6	4.3
Fixed Investment	2005	10.9	5.0	-6.6	10.5	4.1	1.9	-1.7	2.7	6.7	2.1
	2006	2.6	7.5	3.9	3.9	7.1	3.4	17.0	0.1	4.2	4.2
	2007	9.3	9.4	10.9	1.5	3.4	4.2	19.6	0.6	7.5	4.4
	2008	11.9	1.1	-0.9	1.2	1.0	-1.9	13.5	-12.4	4.7	-2.9
	2009	3.3	-5.6	-2.0	-9.2	-3.9	-1.0	-2.9	-11.0	-2.6	-4.3
	2010	8.5	9.8	19.5	9.4	7.8	7.0	5.1	23.4	10.8	11.4
	2011 Q1	7.3	6.5	14.8	9.3	-0.3	-2.2	-7.8	8.6	8.9	0.5
	2011 Q2	9.2	3.2	-4.1	4.1	8.1	-1.1	10.0	1.6	4.5	2.1
Exports of Goods & Services	2005	16.6	8.3	4.8	4.2	10.6	7.8	20.7	7.8	9.6	9.3
	2006	9.4	6.6	13.4	9.1	9.4	11.4	9.7	11.4	9.4	10.9
	2007	8.5	4.1	5.5	7.8	8.3	12.6	20.1	9.6	6.9	11.8
	2008	9.5	1.7	-8.4	5.1	2.5	6.6	-29.7	0.9	3.8	1.2
	2009	-9.7	-10.5	-7.8	-12.5	-10.3	-1.2	20.4	-8.7	-10.3	-2.7
	2010	14.9	9.9	21.0	14.7	16.8	14.5	38.0	25.7	14.9	20.1
	2011 Q1	12.3	1.4	2.0	16.0	15.1	16.8	25.7	11.2	-4.4	15.8
	2011 Q2	17.4	4.1	-0.3	11.8	1.7	9.6	-4.3	4.4	-0.5	5.7

Sources: Haver Analytics, national data sources, and World Bank staff estimates. Regional averages are 2000 US\$ GDP weighted.

**Appendix Table 3. East Asia: Merchandise Export Growth**

in U.S. dollars, percent change from a year earlier

	2008	2009	2010	Q4 2010	Q1 2011	Q2 2011	Q3 2011	Jun-11	Jul-11	Aug-11	Sep-11
East Asia and Pacific (10)	13.6	-16.2	29.8	22.5	25.3	19.6	17.4	16.9	20.4	20.6	15.0
China	17.4	-15.9	31.3	24.9	26.4	22.1	20.6	17.9	20.5	24.5	17.1
S.E. Asia	15.0	-16.6	29.7	23.9	25.4	22.6	19.9	23.9	29.8	25.0	21.2
Indonesia	20.1	-15.0	35.5	28.9	27.7	43.8	40.3	49.1	39.5	35.9	46.3
Malaysia	13.4	-21.2	26.3	12.8	15.9	16.8	16.4	18.2	14.6	17.2	17.3
Philippines	-2.7	-21.7	33.9	21.7	7.8	1.0	0.0	-9.4	-1.7	-13.7	-27.4
Thailand	14.3	-13.6	28.6	20.8	28.1	19.4	29.0	16.8	38.3	31.1	19.1
Vietnam	29.2	-10.1	26.9	34.2	34.1	28.8	39.7	33.9	54.6	34.9	30.3
NIEs	9.3	-16.2	28.3	20.2	25.1	15.2	13.4	12.6	16.2	14.4	9.8
Hong Kong SAR, China	5.3	-12.2	22.5	14.2	24.2	7.9	4.0	9.3	9.1	6.5	-3.4
Korea, Rep.	13.6	-13.9	28.3	23.8	29.6	18.7	21.7	11.2	21.1	25.5	18.8
Singapore	12.9	-20.2	30.5	22.5	24.6	19.8	15.8	20.1	16.7	16.7	13.9
Taiwan, China	3.7	-20.5	35.0	20.2	19.1	13.7	11.0	10.4	17.2	6.4	9.4

Source: Haver Analytics.

**Appendix Table 4. East Asia and the Pacific: GDP Growth Projections**

percent change from a year earlier

	2002	2003	2004	2005	2006	2007	2008	2009	2010	2011	2012
East Asia and Pacific	7.0	6.7	7.9	8.0	9.1	10.1	6.3	4.9	9.3	7.1	6.7
Developing East Asia	7.9	8.8	9.0	9.8	10.9	12.3	8.5	7.5	9.7	8.2	7.8
China	9.1	10.0	10.1	11.3	12.7	14.2	9.6	9.2	10.4	9.1	8.4
Indonesia	4.5	4.8	5.0	5.7	5.5	6.3	6.0	4.6	6.1	6.4	6.3
Malaysia	5.4	5.8	6.8	5.3	5.8	6.5	4.8	-1.6	7.2	4.3	4.9
Philippines	3.6	5.0	6.7	4.8	5.2	6.6	4.2	1.1	7.6	4.2	4.8
Thailand	5.3	7.1	6.3	4.6	5.1	5.0	2.5	-2.3	7.8	2.4	4.0
Vietnam	7.1	7.3	7.8	8.4	8.2	8.5	6.3	5.3	6.8	5.8	6.1
Cambodia	6.6	8.5	10.3	13.3	10.8	10.2	6.7	0.1	6.0	6.0	6.5
Fiji	3.2	1.0	5.3	0.7	1.8	-0.9	1.0	-1.3	0.3	1.4	1.5
Lao PDR	5.9	6.1	6.4	7.1	8.5	7.5	7.5	7.6	8.5	8.0	7.5
Mongolia	4.2	6.1	10.8	7.3	8.6	10.2	8.9	-1.3	6.4	14.9	15.1
Papua New Guinea	-0.2	2.2	2.7	3.4	2.3	7.2	6.7	5.5	7.5	10.0	6.0
Solomon Islands	-2.8	6.5	8.0	5.0	6.9	10.7	7.1	-4.7	7.0	9.0	6.0
Timor-Leste	2.4	0.1	4.2	6.2	-5.8	8.4	12.8	12.9	..	..	..
East Asia NIEs	5.6	3.2	6.0	4.9	5.8	5.9	1.8	-0.8	8.3	4.3	3.9

Sources: World Bank data and staff estimates.

**Appendix Table 5. Regional Aggregates for Poverty Measures in East Asia**

	Mean Consumption (2005 PPP\$/month)	\$1.25-a-day		\$2-a-day		Population (million)
		Headcount Index (%)	Number of Poor (million)	Headcount Index (%)	Number of Poor (million)	
<b>East Asia and Pacific</b>						
1990	49.16	54.7	873.3	79.8	1,273.7	1,595.9
1993	54.55	50.8	845.3	75.8	1,262.1	1,664.9
1996	67.01	36.0	622.3	64.1	1,108.1	1,728.7
1999	70.76	35.5	635.1	61.8	1,104.9	1,788.4
2002	85.65	27.6	506.8	51.9	954.1	1,837.0
2005	106.85	16.8	316.2	38.7	728.7	1,884.4
<b>East Asia and Pacific excluding China</b>						
1990	72.98	39.2	180.5	66.0	304.4	460.8
1993	73.84	42.6	207.3	68.0	330.9	486.4
1996	85.81	35.0	178.8	61.5	314.2	511.2
1999	82.96	35.2	188.1	62.7	335.2	534.7
2002	89.76	25.5	142.1	54.0	300.8	556.6
2005	100.98	19.0	110.2	44.8	259.5	579.9
<b>South East Asia (Indonesia, Malaysia, Philippines, Thailand)</b>						
1990	77.05	38.6	120.3	65.1	202.9	311.8
1993	82.24	37.8	124.2	63.8	209.8	328.7
1996	96.46	29.5	101.6	56.2	193.9	344.9
1999	91.12	31.8	114.8	59.2	213.6	361.1
2002	97.84	21.3	80.3	49.9	188.4	377.3
2005	107.30	17.0	66.8	42.2	166.0	393.8
<b>Lower-Income East Asia (Cambodia, Lao PDR, PNG, Vietnam)</b>						
1990	58.57	41.2	34.6	69.5	58.4	84.1
1993	43.53	60.5	54.4	83.6	75.2	90.0
1996	47.82	55.1	52.7	80.6	77.1	95.7
1999	54.43	47.3	47.4	75.3	75.6	100.3
2002	60.87	41.0	42.6	69.1	71.9	104.1
2005	79.14	26.1	28.4	53.8	58.6	108.8

Source: World Bank PovcalNet.

**Appendix Table 6. East Asia: Exchange Rates**

local currency per U.S. dollar, end-of-period

	China	Indonesia	Malaysia	Philippines	Thailand	Vietnam	Hong Kong SAR, China	Korea, Rep.	Singapore	Taiwan, China	Japan
Jan-2008	7.19	9,291	3.24	40.65	33.19	15,971	7.80	943.9	1.42	32.20	106.36
Feb-2008	7.11	9,051	3.19	40.36	32.61	15,931	7.78	937.3	1.39	30.95	104.73
Mar-2008	7.02	9,217	3.19	41.87	31.46	16,105	7.79	991.7	1.38	30.41	100.10
Apr-2008	7.00	9,234	3.16	42.19	31.59	16,116	7.80	999.7	1.36	30.45	104.08
May-2008	6.95	9,318	3.24	43.88	32.11	16,246	7.80	1031.4	1.37	30.41	105.66
Jun-2008	6.86	9,225	3.27	44.76	33.20	16,842	7.80	1043.4	1.36	30.35	106.40
Jul-2008	6.86	9,118	3.26	44.14	33.50	16,755	7.80	1008.5	1.37	30.59	107.99
Aug-2008	6.85	9,157	3.39	45.69	33.86	16,525	7.80	1081.8	1.42	31.52	109.10
Sep-2008	6.85	9,378	3.46	46.92	34.29	16,575	7.77	1187.7	1.43	32.13	104.30
Oct-2008	6.86	10,995	3.56	48.75	34.43	16,813	7.75	1291.4	1.48	33.00	98.30
Nov-2008	6.87	12,151	3.62	48.88	35.09	16,974	7.75	1482.7	1.51	33.30	95.25
Dec-2008	6.86	10,950	3.46	47.49	35.04	17,433	7.75	1257.5	1.44	32.86	90.75
Jan-2009	6.86	11,355	3.61	47.08	34.92	17,475	7.75	1368.5	1.51	33.80	89.60
Feb-2009	6.84	11,980	3.69	48.24	35.33	17,475	7.75	1516.4	1.54	34.95	97.55
Mar-2009	6.84	11,575	3.65	48.42	35.78	17,756	7.75	1377.1	1.52	33.92	98.10
Apr-2009	6.85	10,713	3.56	48.70	35.46	17,784	7.75	1348.0	1.48	33.23	97.60
May-2009	6.82	10,340	3.51	47.55	34.57	17,784	7.75	1272.9	1.45	32.65	96.50
Jun-2009	6.81	10,225	3.52	48.31	34.14	17,801	7.75	1284.7	1.45	32.82	95.95
Jul-2009	6.82	9,920	3.52	48.12	34.05	17,815	7.75	1240.5	1.44	32.82	95.33
Aug-2009	6.82	10,060	3.53	48.91	34.02	17,823	7.75	1244.9	1.44	32.92	92.70
Sep-2009	6.83	9,681	3.47	47.59	33.83	17,841	7.75	1188.7	1.41	32.20	89.77
Oct-2009	6.82	9,545	3.41	47.73	33.41	17,862	7.75	1200.6	1.40	32.54	91.38
Nov-2009	6.83	9,480	3.39	46.75	33.28	18,485	7.75	1167.4	1.38	32.19	86.75
Dec-2009	6.83	9,400	3.42	46.36	33.23	18,472	7.76	1167.6	1.40	32.03	92.06
Jan-2010	6.82	9,365	3.41	46.74	33.04	18,472	7.76	1156.5	1.40	31.99	89.85
Feb-2010	6.84	9,335	3.41	46.26	33.15	18,925	7.76	1158.4	1.41	32.09	89.25
Mar-2010	6.83	9,115	3.27	45.22	32.51	19,080	7.77	1130.8	1.40	31.82	93.25
Apr-2010	6.83	9,012	3.19	44.64	32.29	18,960	7.77	1115.5	1.37	31.42	94.06
May-2010	6.83	9,180	3.25	46.21	32.40	18,980	7.79	1200.2	1.40	32.23	91.30
Jun-2010	6.84	9,083	3.26	46.42	32.47	19,065	7.79	1210.3	1.40	32.28	88.60
Jul-2010	6.85	8,952	3.19	45.81	32.33	19,095	7.77	1187.2	1.36	32.05	86.50
Aug-2010	6.86	9,041	3.14	45.18	31.74	19,485	7.78	1189.1	1.36	32.10	84.25
Sep-2010	6.85	8,924	3.09	43.90	30.83	19,485	7.76	1142.0	1.32	31.33	83.40
Oct-2010	6.86	8,928	3.11	43.18	29.97	19,495	7.75	1126.6	1.30	30.78	80.58
Nov-2010	6.86	9,013	3.16	44.26	29.89	19,498	7.77	1157.3	1.32	30.85	84.15
Dec-2010	6.86	8,991	3.08	43.89	30.12	19,498	7.78	1138.9	1.29	30.37	81.45
Jan-2011	6.87	9,057	3.06	44.09	30.58	19,498	7.80	1114.3	1.29	29.30	82.05
Feb-2011	6.86	8,823	3.05	43.84	30.72	20,875	7.79	1127.9	1.27	29.75	81.70
Mar-2011	6.86	8,709	3.03	43.43	30.37	20,908	7.78	1107.2	1.26	29.42	83.13
Apr-2011	6.87	8,574	2.97	43.02	30.05	20,625	7.77	1072.3	1.23	28.76	82.06
May-2011	6.87	8,537	3.01	43.29	30.25	20,535	7.78	1080.6	1.23	28.77	80.85
Jun-2011	6.86	8,597	3.02	43.49	30.52	20,565	7.78	1078.1	1.23	28.80	80.72
Jul-2011	6.86	8,508	2.96	42.23	30.07	20,555	7.79	1052.6	1.20	28.89	77.55
Aug-2011	6.85	8,578	2.98	42.51	29.88	20,822	7.80	1071.7	1.20	29.02	76.59
Sep-2011	6.84	8,823	3.19	43.64	31.23	20,822	7.79	1179.5	1.30	30.51	76.63
Oct-2011	6.85	8,835	3.07	43.03	30.71	20,999	7.77	1104.5	1.25	29.93	78.21

Sources: Haver Analytics, Datastream.

**Appendix Table 7. East Asia: Foreign Exchange Reserves Excluding Gold**

in billions of U.S. dollars

	China	Indonesia	Malaysia	Philippines	Thailand	Hong Kong SAR, China	Korea, Rep.	Singapore	Taiwan, China	Total
Dec-1997	142.8	17.4	20.8	7.3	26.3	92.8	20.4	71.3	83.5	482.5
Dec-1998	149.2	23.5	25.6	9.3	28.8	89.7	52.0	75.1	90.3	543.4
Dec-1999	157.7	27.3	30.6	13.3	34.1	96.2	74.0	77.0	106.2	616.4
Dec-2000	168.3	29.4	28.4	13.1	32.0	107.5	96.1	80.2	106.7	661.8
Dec-2001	215.6	28.0	29.6	13.5	32.4	111.2	102.8	75.7	122.2	730.9
Dec-2002	291.1	32.0	33.4	13.3	38.1	111.9	121.3	82.2	161.7	885.1
Dec-2003	408.2	36.3	44.6	13.7	41.1	118.4	155.3	96.2	206.6	1,120.3
Dec-2004	614.5	36.3	66.4	13.1	48.7	123.5	199.0	112.6	241.7	1,455.9
Dec-2005	821.5	34.7	70.2	15.9	50.7	124.2	210.3	116.2	253.3	1,697.1
Dec-2006	1,068.5	42.6	82.2	20.0	65.3	133.2	238.9	136.3	266.1	2,053.0
Dec-2007	1,530.3	56.9	101.1	30.2	85.2	152.6	262.1	163.0	270.3	2,651.7
Dec-2008	1,949.3	51.6	91.2	33.2	108.7	182.5	201.1	174.2	291.7	3,083.4
Dec-2009	2,416.0	66.1	96.4	38.8	135.5	255.8	269.9	187.8	348.2	3,814.5
Jan-2010	2,432.0	69.6	95.7	40.2	139.5	257.0	273.6	189.6	350.7	3,847.8
Feb-2010	2,441.2	69.7	95.6	40.2	138.8	258.2	270.6	187.6	352.7	3,854.6
Mar-2010	2,463.5	71.8	94.0	39.6	141.1	258.8	272.3	196.9	355.0	3,893.0
Apr-2010	2,506.9	78.6	94.7	40.6	144.4	259.2	278.8	203.2	357.6	3,963.9
May-2010	2,456.2	74.6	96.2	41.0	140.2	256.1	270.1	198.1	360.1	3,892.7
Jun-2010	2,471.2	76.3	93.3	41.8	143.4	256.7	274.1	199.7	362.4	3,919.1
Jul-2010	2,556.4	78.8	93.6	42.4	147.7	260.6	285.9	206.7	370.1	4,042.2
Aug-2010	2,565.3	81.3	93.8	42.8	151.2	261.3	285.3	206.2	372.1	4,059.2
Sep-2010	2,666.9	86.6	107.5	46.4	159.0	266.0	289.7	214.5	380.5	4,216.9
Oct-2010	2,779.8	91.8	114.1	50.3	166.7	267.0	293.3	221.2	383.8	4,368.0
Nov-2010	2,786.1	92.8	104.3	53.7	163.5	266.0	290.2	217.4	379.3	4,353.0
Dec-2010	2,866.1	96.2	104.9	55.4	167.5	268.6	291.5	225.5	382.0	4,457.7
Jan-2011	2,952.4	95.3	106.5	57.0	169.7	273.1	295.9	226.9	387.1	4,563.8
Feb-2011	3,012.2	99.6	108.1	56.9	174.9	272.6	297.6	230.7	390.7	4,643.3
Mar-2011	3,067.2	105.7	112.2	58.9	176.5	272.5	298.5	234.0	392.6	4,718.2
Apr-2011	3,168.5	113.8	128.3	60.9	184.4	276.8	307.1	242.3	399.5	4,881.7
May-2011	3,188.3	118.1	131.1	61.3	180.1	275.8	305.0	239.7	398.7	4,898.0
Jun-2011	3,219.8	119.7	132.6	61.4	178.8	277.1	304.4	242.1	400.3	4,936.1
Jul-2011	3,267.4	122.7	133.7	64.2	181.0	278.7	309.7	248.9	400.8	5,007.0
Aug-2011	3,284.4	124.6	134.5	68.4	180.3	279.4	310.9	249.0	400.3	5,031.8
Sep-2011	3,223.0	114.5	129.1	67.7	172.1	277.7	302.1	233.4	389.2	4,908.8
Oct-2011		114.0	134.6	67.9			309.7	245.2	393.3	

Sources: Haver Analytics, Thomson Datastream, and IMF International Financial Statistics.

**Appendix Table 8a. East Asia: Balance of Payments**

in percent of GDP

	Overall Balance					Current Account					Capital Account 1/				
	2006	2007	2008	2009	2010	2006	2007	2008	2009	2010	2006	2007	2008	2009	2010
East Asia and Pacific	7.1	8.9	6.8	8.2	7.1	7.0	8.4	7.1	5.8	4.9	0.1	0.4	-0.2	2.4	2.2
China	10.2	13.2	10.6	8.0	7.9	8.3	10.1	9.1	5.2	5.1	1.9	3.1	1.5	2.8	2.8
S.E. Asia	4.7	5.1	1.6	3.9	5.4	5.3	6.2	3.8	6.4	2.0	-0.6	-1.1	-2.2	-2.5	3.4
Indonesia	4.1	2.9	-0.4	2.3	4.3	3.0	2.4	0.0	2.0	0.8	1.1	0.5	-0.4	0.3	3.5
Malaysia	4.4	7.0	-1.6	2.0	0.0	16.7	15.9	17.5	16.5	0.0	-12.3	-8.9	-19.0	-14.5	0.0
Philippines	4.5	6.0	0.1	2.7	8.8	4.5	4.9	2.2	5.8	4.5	-0.1	1.1	-2.1	-3.1	4.4
Thailand	6.1	6.9	9.0	9.2	9.8	1.1	6.3	0.8	8.3	4.6	5.0	0.6	8.2	0.9	5.2
NIEs	3.1	2.5	1.0	12.8	6.3	6.0	7.2	5.1	8.0	6.9	-2.9	-4.7	-4.1	4.8	-0.7
Hong Kong SAR, China	3.2	7.1	15.8	33.9	4.1	12.1	12.3	13.7	8.6	6.2	-8.9	-5.2	2.1	25.3	-2.1
Korea, Rep.	2.3	1.4	-6.1	8.2	2.7	1.5	2.1	0.3	3.9	2.8	0.8	-0.6	-6.4	4.3	-0.1
Singapore	11.7	11.1	6.9	6.4	19.0	24.8	27.3	14.7	19.2	22.3	-13.1	-16.2	-7.8	-12.8	-3.3
Taiwan, China	1.6	-1.0	6.6	14.3	9.3	7.0	8.9	6.9	11.3	9.2	-5.4	-10.0	-0.3	3.0	0.1
Median	4.4	6.9	6.6	8.0	7.9	7.0	8.9	6.9	8.3	4.6	-0.1	-0.6	-0.4	0.9	0.1

Sources: IMF, Haver Analytics, national sources.

1/ Capital Account + Financial Account + Errors and Omissions.

**Appendix Table 8b. East Asia: Capital Account Components**

in percent of GDP

	Net FDI					Net Portfolio					Net Other Capital 2/				
	2006	2007	2008	2009	2010	2006	2007	2008	2009	2010	2006	2007	2008	2009	2010
East Asia and Pacific	2.3	2.1	1.7	0.6	1.3	-2.3	-0.8	-0.8	0.3	0.1	-2.3	-0.8	-0.8	0.3	0.1
China	3.7	4.1	2.7	1.4	2.1	-2.4	0.5	0.9	0.8	0.4	-2.4	0.5	0.9	0.8	0.4
S.E. Asia	1.6	0.7	0.1	-0.1	0.6	2.0	0.9	-2.4	0.3	3.1	2.0	0.9	-2.4	0.3	3.1
Indonesia	0.6	0.5	0.7	0.5	1.5	1.2	1.3	0.3	1.9	1.9	1.2	1.3	0.3	1.9	1.9
Malaysia	0.0	-1.5	-3.5	-3.4	-1.8	2.2	2.9	-10.8	-0.2	6.2	2.2	2.9	-10.8	-0.2	6.2
Philippines	2.4	-0.4	0.8	1.0	0.6	3.9	3.3	-2.2	-0.4	3.3	3.9	3.3	-2.2	-0.4	3.3
Thailand	4.1	3.4	1.6	0.3	0.3	2.1	-2.7	-0.8	-2.3	3.2	2.1	-2.7	-0.8	-2.3	3.2
NIEs	0.2	-1.3	-0.2	-2.0	-0.9	-4.4	-4.6	-4.1	-1.2	-3.4	-4.4	-4.6	-4.1	-1.2	-3.4
Hong Kong SAR, China	0.0	-3.3	4.2	-5.5	-3.2	-14.1	-1.3	-17.7	-20.5	-27.1	-14.1	-1.3	-17.7	-20.5	-27.1
Korea, Rep.	-0.8	-1.7	-1.8	-1.8	-1.9	-2.4	-2.5	-0.3	6.0	3.8	-2.4	-2.5	-0.3	6.0	3.8
Singapore	7.3	2.4	4.7	-1.7	8.5	-2.7	-8.8	-9.5	-8.5	-9.8	-2.7	-8.8	-9.5	-8.5	-9.8
Taiwan, China	0.0	-0.8	-1.2	-0.8	-2.1	-5.0	-10.2	-3.1	-2.7	-4.8	-5.0	-10.2	-3.1	-2.7	-4.8
Median	0.6	-0.4	0.8	-0.8	0.3	-2.4	-1.3	-2.2	-0.4	1.9	-2.4	-1.3	-2.2	-0.4	1.9

Sources: IMF, Haver Analytics, national sources.

3/ Net Other Investment + Net Financial Derivatives

**Appendix Table 9. East Asia: Nonperforming Loans**

in percent of total loans

	1997	1998	1999	2000	2001	2002	2003	2004	2005	2006	2007	2008	2009	2010	2011	
	Dec	Dec	Dec	Dec	Dec	Dec	Dec	Dec	Dec	Dec	Dec	Dec	Dec	Dec	Mar	Jun
China 1/	..	..	..	..	..	23.6	17.9	13.2	8.6	7.1	6.2	2.4	1.6	1.1	1.1	1.0
Indonesia 2/	7.2	48.6	32.9	18.8	12.1	7.5	6.8	4.5	7.6	6.1	4.1	3.2	3.3	2.6	2.9	2.8
Malaysia 3/	..	10.6	11.0	9.7	11.5	10.2	9.0	7.5	5.8	4.8	3.2	2.2	1.8	2.3	2.2	2.0
Philippines 4/	..	11.0	12.7	14.9	16.9	14.6	13.8	12.5	8.6	6.1	4.9	4.1	3.7	3.6	4.3	..
Thailand 5/	..	45.0	38.9	17.7	10.4	15.7	12.7	10.7	8.2	7.5	7.3	5.3	4.9	3.6	3.2	3.0
Korea, Rep. 6/	6.0	7.3	13.6	8.8	3.3	2.4	2.2	2.0	1.3	0.9	0.7	1.1	1.2	1.9	2.0	1.7

Source: National data sources.

1/ Covers only the major commercial banks for 2002-04, and all commercial banks for 2005-10.

2/ Excludes IBRA's AMC. Data for 1997 to 2002 excludes state banks; the data source is the Monetary Division of Bank Indonesia. Data from 2003 covers all commercial banks including state banks; the data source is the Banking Supervision Division of Bank Indonesia

3/ Excludes Danaharta. This series, used by Bank Negara Malaysia, is net of provisions and excludes interest in suspense.

4/ Includes interbank loans.

5/ Excludes transfers to AMCs. The jump in headline NPLs in December 2002 was a one-off increase, reflecting a change in definition and did not affect provisioning.

6/ Excludes KAMCO/KDIC.



**Appendix Table 10. East Asia: Financial Market Indicators****Stock Market Index, end-of-period, Dec. 31, 2007 = 100**

	Jun-07	Dec-07	Jun-08	Dec-08	Jun-09	Dec-09	Jun-10	Dec-10	Jun-11	Oct-11
China	72.6	100.0	52.0	34.6	56.3	62.3	45.5	53.3	52.4	46.8
Indonesia	77.9	100.0	85.6	49.4	73.8	92.3	106.1	134.9	141.6	138.1
Malaysia	93.7	100.0	82.1	60.7	74.4	88.1	90.9	105.1	109.3	103.2
Philippines	101.1	100.0	67.9	51.7	67.3	84.3	93.1	116.0	118.5	119.7
Thailand	90.5	100.0	89.6	52.4	69.6	85.6	92.9	120.4	121.4	113.6
Vietnam	110.5	100.0	43.1	34.0	48.4	53.4	54.7	52.3	46.7	45.4
Hong Kong SAR, China	78.3	100.0	79.5	51.7	66.1	78.6	72.4	82.8	80.5	71.4
Korea, Rep.	91.9	100.0	88.3	59.3	73.3	88.7	89.5	108.1	110.7	100.6
Singapore	100.3	100.0	85.1	50.8	67.3	83.6	81.8	92.0	90.0	82.4
Taiwan, China	104.4	100.0	88.4	54.0	75.6	96.3	86.2	105.5	101.7	89.2

Source: Thomson Datastream.

**Yields, 10-year local-currency government bonds, end-of-period, in percent**

	Jun-07	Dec-07	Jun-08	Dec-08	Jun-09	Dec-09	Jun-10	Dec-10	Jun-11	Oct-11
China	4.4	4.5	4.5	2.8	3.2	3.6	3.3	3.9	3.9	3.9
Indonesia	9.0	10.0	13.4	11.9	11.1	10.1	8.4	7.6	7.5	6.9
Malaysia	5.0	4.1	4.9	3.2	4.4	4.3	4.0	4.0	3.9	3.7
Philippines	7.4	6.6	9.4	7.4	8.1	8.1	7.9	6.1	6.6	6.2
Thailand	4.5	5.0	5.9	2.7	3.7	4.2	3.1	3.7	3.9	3.7
Vietnam	7.8	9.1	16.0	10.2	9.7	11.5	11.5	11.8	12.5	12.7
Hong Kong SAR, China	4.8	3.4	3.5	1.9	2.6	2.6	2.3	2.9	2.3	1.3
Korea, Rep.	5.5	5.7	6.0	4.2	5.2	5.4	5.0	4.5	4.3	4.0
Singapore	2.9	2.7	3.6	2.1	2.6	2.7	2.4	2.7	2.3	1.6
Taiwan, China	2.5	2.6	2.7	1.4	1.6	1.5	1.4	1.6	1.6	1.3

Source: Bloomberg.

**Foreign-Currency Government Bond Spreads (EMBIG), end-of-period, in basis points over U.S. Treasuries**

	Jun-07	Dec-07	Jun-08	Dec-08	Jun-09	Dec-09	Jun-10	Dec-10	Jun-11	Oct-11
China	54	120	137	228	122	104	86	126	155	293
Indonesia	165	275	381	762	433	230	274	183	178	332
Malaysia	75	119	153	119	167	136	171	117	131	233
Philippines	155	172	303	546	324	206	266	163	160	289
Vietnam	122	203	368	747	379	314	338	323	329	549

Source: JP Morgan, Bloomberg.

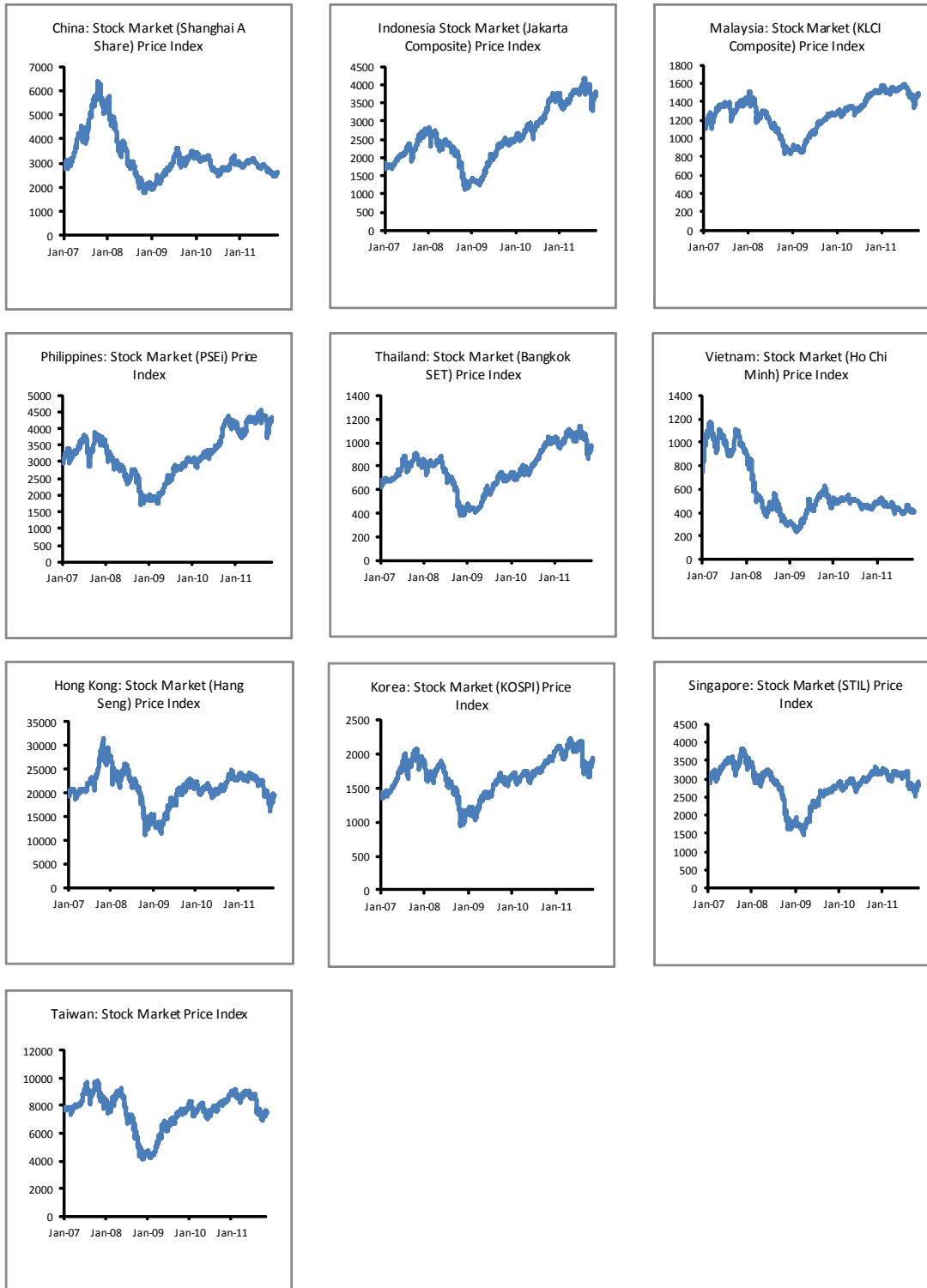
**Credit Default Swap (CDS) Spreads on Foreign-Currency Government Bonds, 5-year, end-of-period, in basis points**

	Jun-07	Dec-07	Jun-08	Dec-08	Jun-09	Dec-09	Jun-10	Dec-10	Jun-11	Oct-11
China	13	29	75	188	75	73	91	68	85	120
Indonesia	110	154	286	638	317	188	186	133	141	177
Malaysia	16	44	116	225	105	90	102	74	93	127
Philippines	111	153	266	384	217	168	174	130	138	164
Thailand	39	55	135	256	110	96	134	99	136	158
Hong Kong SAR, China	5	18	42	104	68	48	57	46	54	75
Korea, Rep.	17	47	107	319	182	85	131	98	103	131
Singapore	..	..	..	45	45	35	45	45	90	83

Source: Thomson Datastream.

## APPENDIX CHARTS

### Appendix Chart 1. East Asia: Stock Market Price Indices



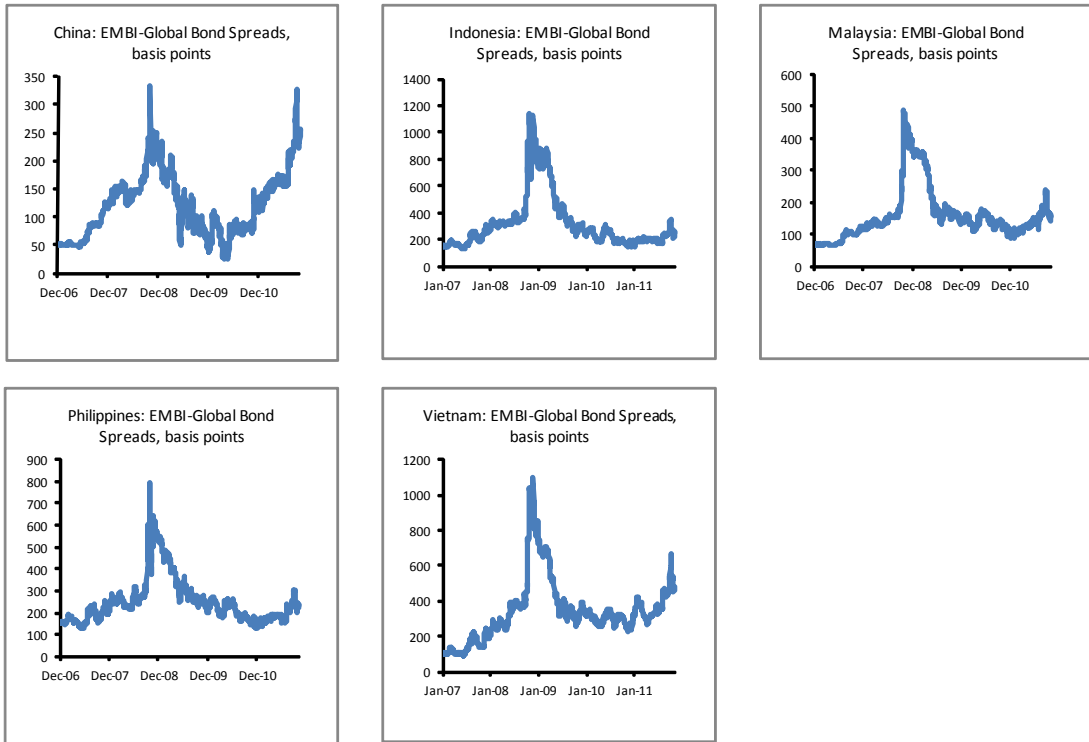
Sources: Thomson Datastream.

## Appendix Chart 2. East Asia: Local-Currency 10-Year Government Bond Yields



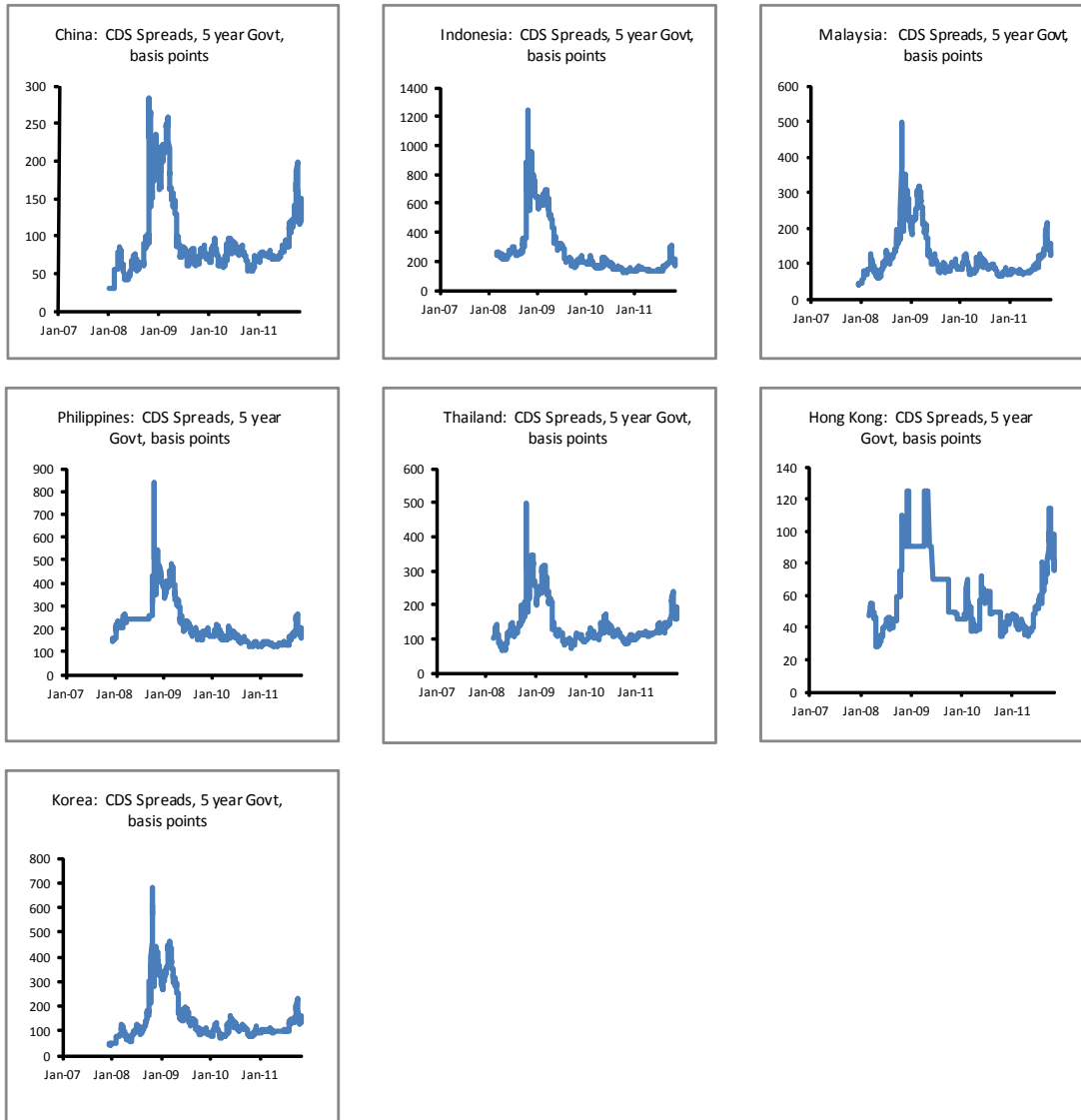
Source: Bloomberg.

**Appendix Chart 3. East Asia: Foreign-Currency Government Bond Spreads**



Source: JPMorgan Emerging Markets Bond Index Global (EMBIG), via Bloomberg.

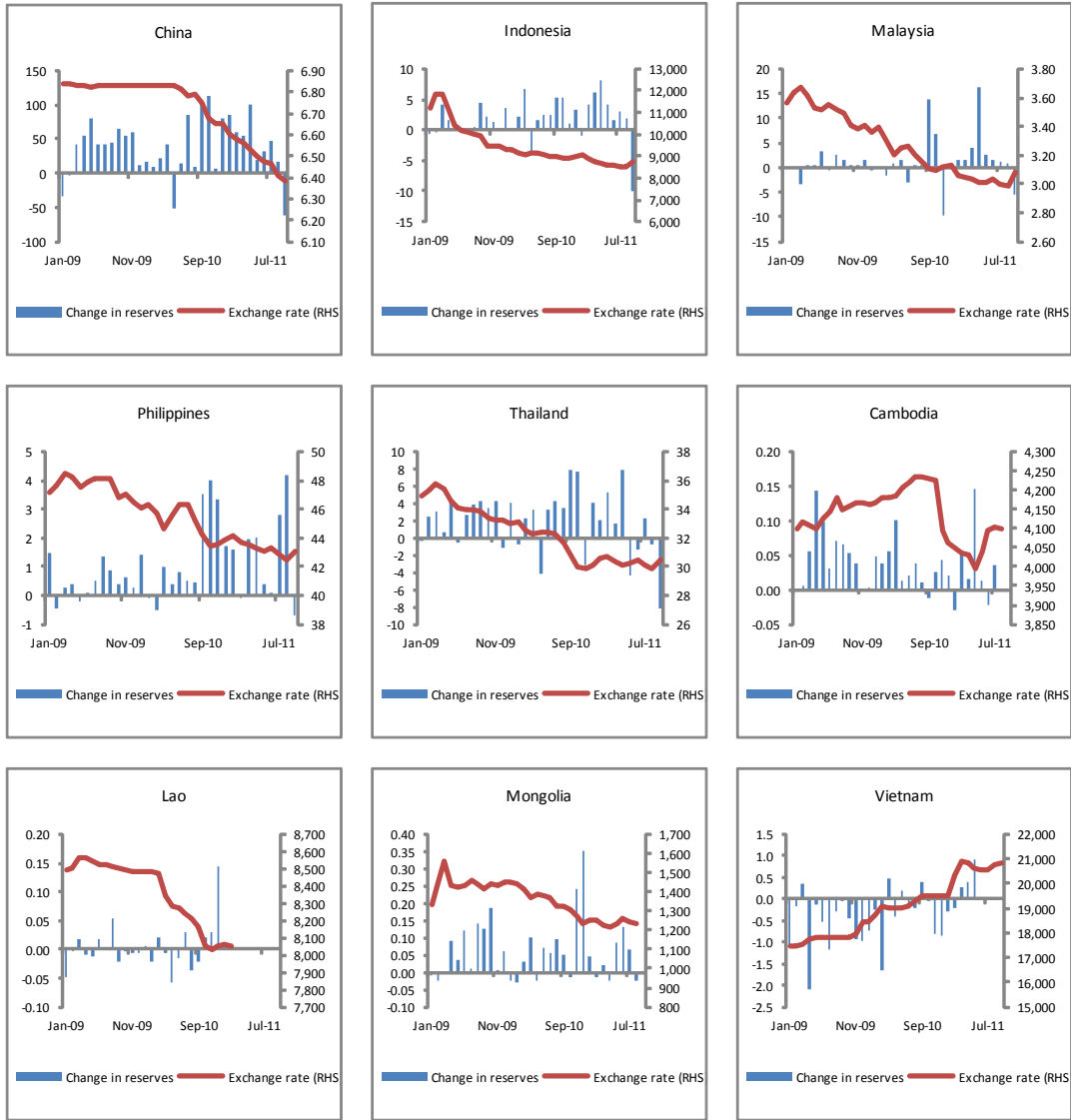
### Appendix Chart 4. East Asia: Sovereign Credit Default Swap (CDS) Spreads



Source: Thomson Reuters, via Datastream.

### Appendix Chart 5. East Asia: Foreign Exchange Reserves and Exchange Rates

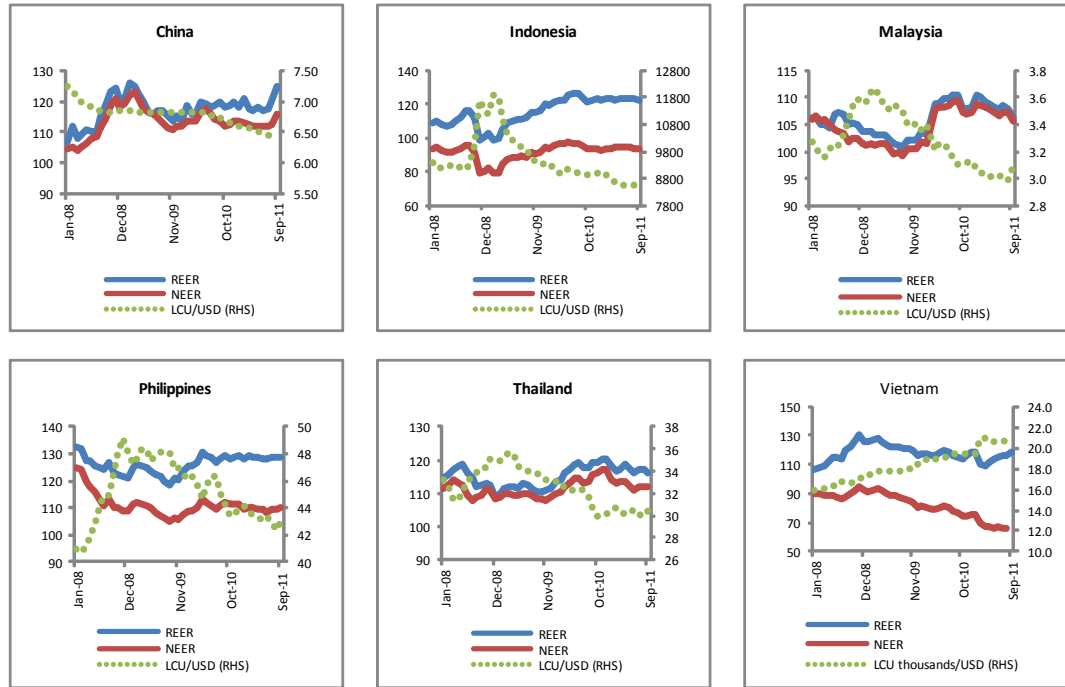
in billions of U.S. dollars and in local currency unit per U.S. dollar



Source: Haver Analytics and IMF.

**Appendix Chart 6. East Asia: Real and Nominal Exchange Rates\***

indices, 2005 = 100, and in local currency unit per U.S. dollar



Source: BIS, IMF and Haver Analytics.  
 \*REER = real effective exchange rate; NEER = nominal effective exchange rate; LCU = local currency units.