

Based on dubious World Bank information on Timor-Leste's GNI, MCC downgraded Timor-Leste from a Low-Middle Income Country (LMIC) to a Low-Income Country (LIC) for FY2012.

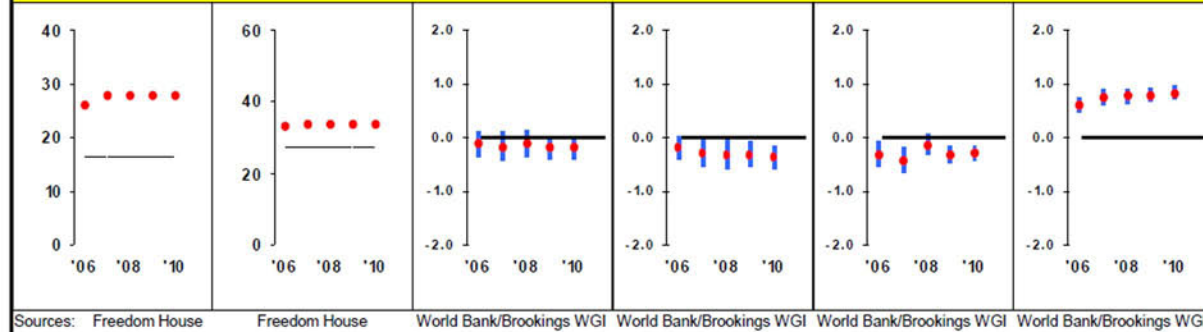
According to other sources, TL's GNI/capita in 2010 was around \$2,555, more than the \$1,280 used by WB/MCC and well above the \$1,916 level for LMICs.

La'o Hamutuk recalculated TL's MCC scorecard for FY2012 to compare this country with other LMICs, as well as with Timor-Leste's scores during the past two years. We added our calculations in green, with yellow background, on top of MCC's scorecard below.

Ruling Justly

Political Rights	Civil Liberties	Control of Corruption	Government Effectiveness	Rule of Law	Voice and Accountability
Data 28 (85%)	34 (64%)	-0.17 (42%)	-0.35 (25%)	-0.28 (29%)	0.83 (88%)
Median 16.5	Median 27.5	Median 0.00	Median 0.00	Median 0.00	Median 0.00

La'o Hamutuk recalculation as a LMIC:					
Data 28 (57%)	34 (43%)	-0.47 (20%)	-0.75 (13%)	-0.74 (10%)	0.18 (63%)
Median 25.0	35.0	0.00	0.00	0.00	0.00

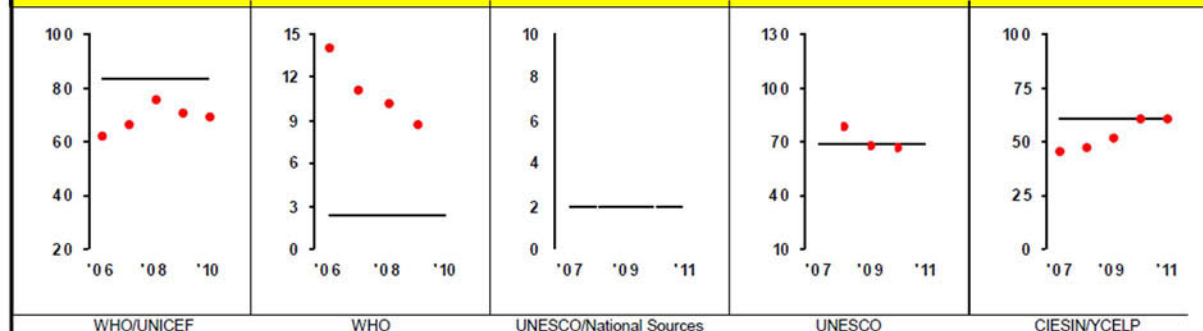


Sources: Freedom House, Freedom House, World Bank/Brookings WGI, World Bank/Brookings WGI, World Bank/Brookings WGI, World Bank/Brookings WGI

Investing In People

Immunization Rates	Health Expenditures	Primary Education Expenditures	Girls' Primary Education Completion	Natural Resource Management
Data 69 (22%)	8.76 (100%)	n/a	66.9 (46%)	60.90 (53%)
Median 83.5	Median 2.45	Median 1.96	Median 68.8	Median 60.60

La'o Hamutuk recalculation as a LMIC:				
Data 69 (3%)	8.76 (86%)	n/a	66.9 (5%)	60.90 (15%)
Median 92.0	2.97	1.93	95.3	75.84



WHO/UNICEF

WHO

UNESCO/National Sources

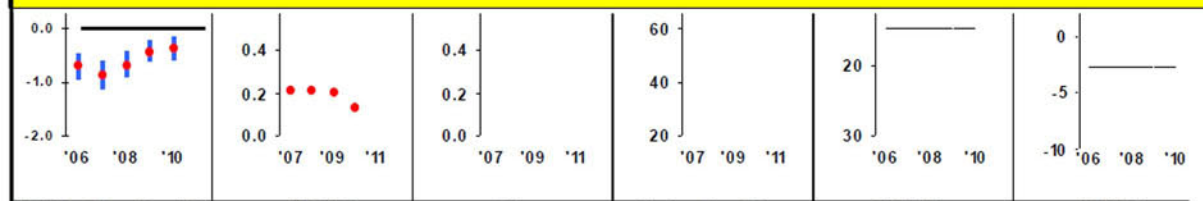
UNESCO

CIESIN/YCELP

Economic Freedom

Regulatory Quality	Land Rights and Access	Business Start-Up	Trade Policy	Inflation	Fiscal Policy
Data -0.36 (22%)	n/a	0.922 (43%)	73.0 (66%)	4.9 (60%)	302.8 (100%)
Median 0.00	Median 0.638	Median 0.937	Median 69.1	Max. 15	Median -2.7

La'o Hamutuk recalculation as a LMIC:					
Data -0.55 (17%)	n/a	0.922 (14%)	73.0 (42%)	4.9 (64%)	302.8 (100%)
Median 0.00	0.712	0.958	74.0	15	-2.7



World Bank/Brookings WGI, IFAD/IFC, IFC, Heritage Foundation, IMF WEO, IMF WEO

How to Read this Scorecard: Each MCC Candidate Country receives an annual scorecard assessing its performance in 3 policy categories: Ruling Justly, Investing in People and Economic Freedom. Under the name of each indicator is the country's score and percentile ranking in its income peer group (0% is worst; 50% is the median; 100% is best). Under each country's percentile ranking is the peer group median. Country performance is evaluated relative to the peer group median. Scores above the median, represented with green, meet the performance standard. Scores at or below the median, represented with red, do not meet the performance standard. The black line that runs along the horizontal axis represents the peer group median. Each of the Worldwide Governance Indicators (World Bank/Brookings Institution) is accompanied by a margin of error, which is represented by the vertical blue bar.

For more information regarding the Millennium Challenge Account Selection Process and these indicators, please consult MCC's website: www.mcc.gov