

Maternal mortality in 1990-2015

WHO, UNICEF, UNFPA, World Bank Group, and United Nations Population Division
Maternal Mortality Estimation Inter-Agency Group

TIMOR-LESTE

| Year | Maternal mortality ratio (MMR) ^a | Maternal deaths | AIDS-related indirect maternal deaths | Live births ^b | Proportion of maternal deaths among deaths of female reproductive age (PM %) |
|------|---|-----------------|---------------------------------------|--------------------------|--|
| | Per 100 000 live births (lb) | Numbers | Numbers | Thousands | |
| 1990 | 1080 [741-1510] | 350 | 0 | 33 | 26.1 |
| 1995 | 897 [641-1230] | 340 | 0 | 38 | 27.8 |
| 2000 | 694 [517-925] | 260 | 0 | 37 | 36.9 |
| 2005 | 506 [391-653] | 190 | 0 | 38 | 30.4 |
| 2010 | 317 [241-412] | 140 | 0 | 43 | 25.5 |
| 2015 | 215 [150-300] | 94 | 0 | 44 | 21.8 |

^a MMR and PM are calculated for women 15-49 years.

^b Live birth data are from World Population Prospects: the 2015 Revision. New York, Population Division, Department of Economic and Social Affairs, United Nations Secretariat; 2015.

| Annual Rate of Reduction | (%) |
|--------------------------|------------------|
| 1990-2015 | 6.5 [4.8 - 8] |
| 1990-2000 | 4.4 [1.6 - 6.7] |
| 2000-2015 | 7.8 [5.7 - 10.2] |
| 2005-2015 | 8.6 [6 - 11.5] |

Available data sources

Data from civil registration system:

| | 1985 | 1986 | 1987 | 1988 | 1989 | 1990 | 1991 | 1992 | 1993 | 1994 | 1995 | 1996 | 1997 | 1998 | 1999 | 2000 |
|---|------|------|------|------|------|------|------|------|------|------|------|------|------|------|------|------|
| Maternal deaths ^c | – | – | – | – | – | – | – | – | – | – | – | – | – | – | – | – |
| Late maternal deaths ^d | – | – | – | – | – | – | – | – | – | – | – | – | – | – | – | – |
| Female deaths ^e | – | – | – | – | – | – | – | – | – | – | – | – | – | – | – | – |
| Adjustment factor ^f | – | – | – | – | – | – | – | – | – | – | – | – | – | – | – | – |
| Maternal deaths not included ^g | – | – | – | – | – | – | – | – | – | – | – | – | – | – | – | – |
| | 2001 | 2002 | 2003 | 2004 | 2005 | 2006 | 2007 | 2008 | 2009 | 2010 | 2011 | 2012 | 2013 | 2014 | 2015 | |
| Maternal deaths ^c | – | – | – | – | – | – | – | – | – | – | – | – | – | – | – | |
| Late maternal deaths ^d | – | – | – | – | – | – | – | – | – | – | – | – | – | – | – | |
| Female deaths ^e | – | – | – | – | – | – | – | – | – | – | – | – | – | – | – | |
| Adjustment factor ^f | – | – | – | – | – | – | – | – | – | – | – | – | – | – | – | |
| Maternal deaths not included ^g | – | – | – | – | – | – | – | – | – | – | – | – | – | – | – | |

^c ICD10 codes O00-O99 Pregnancy, childbirth and the puerperium and A34 Obstetrical tetanus; ICD9 codes 630-676 Complications of pregnancy, childbirth and the puerperium.

^d ICD10 codes O96 and O97.

^e Female deaths data are from WHO VR database 2015.

^f For details on the adjustment factor please refer to: WHO, UNICEF, UNFPA, World Bank Group and the United Nations Population Division. Trends in maternal mortality: 1990 to 2015. Geneva: World Health Organization; 2015.

^g Did not meet inclusion criteria or confidential inquiry used instead.

Available data sources (continued)

Data from studies **included** in analysis:

| Source | Definition | Study period | Maternal deaths | Female deaths, 15-49 | PM(%) | MMR per 100 000 lb | Adjusted MMR per 100 000 lb |
|---------------|-------------------|---------------|-----------------|----------------------|-------|--------------------|-----------------------------|
| DHS 2009-2010 | Pregnancy-related | 2002.9-2009.9 | | | 40.6 | | 592 |
| 2010 Census | Pregnancy-related | 2009.5-2010.5 | | | 21.0 | | 250 |

Data from studies **not included** in analysis:

| Source | Definition | Study period | Maternal deaths | Female deaths, 15-49 | PM(%) | MMR per 100 000 lb | Adjusted MMR per 100 000 lb |
|--------|------------|--------------|-----------------|----------------------|-------|--------------------|-----------------------------|
|--------|------------|--------------|-----------------|----------------------|-------|--------------------|-----------------------------|

Covariates used in the model

| Year | GDP per capita, PPP (constant 2011 Int \$) | General Fertility Rate per 1000 women 15-49 | Skilled attendance at birth (% of births) |
|------|---|--|--|
| 1990 | 1174 | 171 | 22 |
| 1995 | 1573 | 186 | 23 |
| 2000 | 1425 | 223 | 24 |
| 2005 | 1280 | 188 | 25 |
| 2010 | 1812 | 179 | 26 |
| 2015 | 2351 | 167 | 27 |

GDP per capita measured in purchasing power parity (PPP) equivalent dollars, reported as constant 2011 international dollars, based on estimates published by World Bank Group.

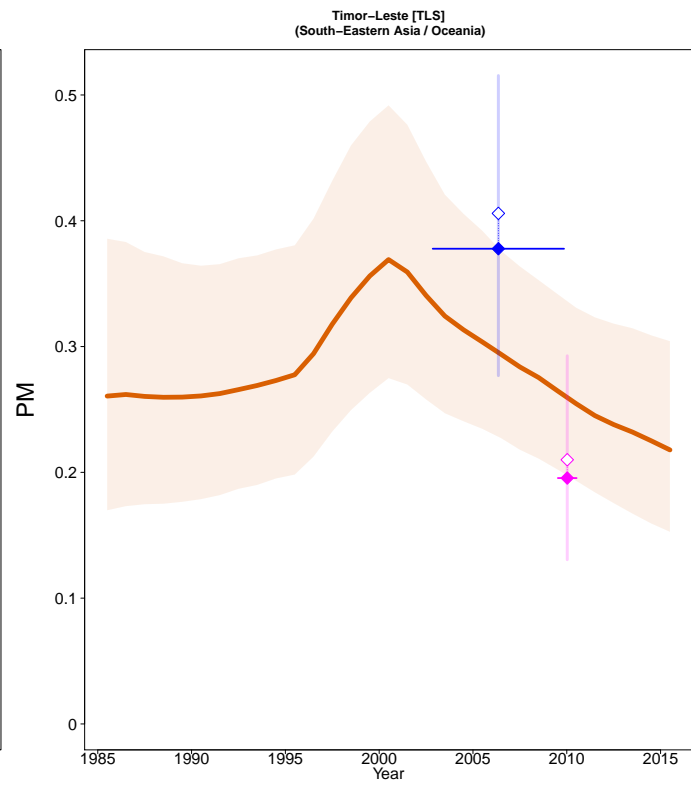
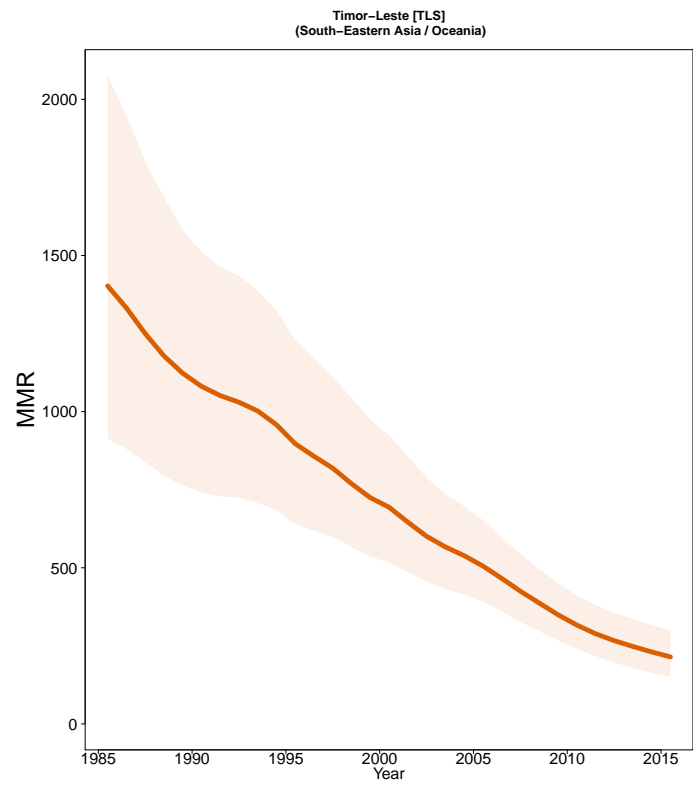
Source: World Bank Group, International Comparison Program database, 2014.

General fertility rate

Source: World Population Prospects: the 2015 Revision. New York, Population Division, Department of Economic and Social Affairs, United Nations Secretariat; 2015.

Percentage of births attended by skilled health personnel (doctors, nurses or midwives).

Source: UNICEF global databases 2015, based on MICS, DHS and other nationally representative sources. (<http://data.unicef.org/>).



- Estimates -
- MMEIG 2015
- MMR Database 2015 -
- ◇ Observed Data
- ◆ Adjusted Data
- Data type -
- ◆ DHS
- ◆ Census